

The

ALLEN MOTOR SCYTHE

MODEL

T.S.



The machine that has proved its worth

The ALLEN SELF-PROPELLED MOTOR SCYTHE

MODEL T.S.

The standard Allen Motor Scythe is equipped with a sturdy Villiers two-stroke engine and a 3 ft. cutting unit.

It is extremely economical in use requiring only a gallon of petrol/oil mixture for five to six hours

continuous run. It enables an operator, with no special skill, to accomplish in an hour as much as twelve good men using ordinary hand scythes. An acre of grassland can be cut in two hours. Alternative engines and cutting units are available and are shown as "Optional Extras."

SPECIFICATION

(We reserve the right to change design or specification without notice)

ENGINE.—Villiers 147 c.c. Mk. 25C two-stroke 1.9 b.h.p. at 2,400 r.p.m.; cast iron cylinder and piston for durability. Speed controlled by governor. Cooled by built-in blower.

WEIGHT.—332 lbs.

WIDTH OF STANDARD CUT.—3 ft.

DIMENSIONS.—Overall length of machine, 6 ft. 3 in.; Width over standard knives, 3 ft. 1½ in.; Width of machine, 2 ft. 3 in.; Height over handlebars, 3 ft.; Height over tank cap, 2 ft. 3 in.

CONTROLS.—Two only. Clutch and throttle.

TYRES.—27 in. diameter x 2¾ in. special Heavy Grip Tread.

OPERATING MECHANISM.—Totally enclosed. Machine cut pinion, Gear Wheel, Worm and Worm Wheel in constant mesh, running in oil.

AUTOMATIC SAFETY CLUTCH.—Incorporated in drive to obviate damage if solid obstacles are encountered when cutting.

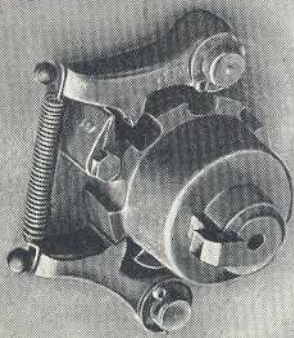
EASY-TURN RATCHET DRIVE.—Fitted as standard. Twin pawls enable drive to be locked for safety when working on steep slopes.

CLUTCH.—Mechanical Servo clutch withdrawal mechanism enables the machine to be easily stopped under all conditions. **FORESTRY GUARDS.**—Fitted as standard.

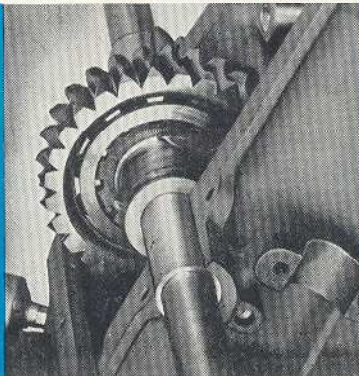
CUTTING UNIT.—Fitted with Allen patent adjustable pads to ensure correct adjustment of knife blade.

HEIGHT OF CUT.—Always under control of operator. Leaves 1½ in. stubble on level ground.

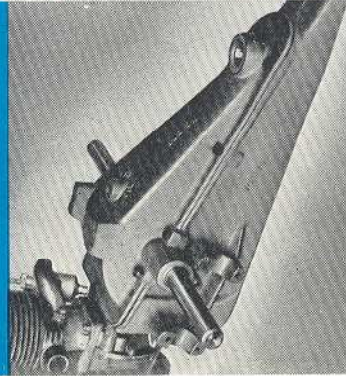
- A. Clutch
- B. Throttle
- C. Positively cooled engine
- D. Air filter on carburettor
- E. Robust vibration-free and grip-proof drive to cutters
- F. Spring lever locates and operates blades
- G. Lever springs from socket to remove blade
- H. Standard sections and fingers
- J. Safety clutch prevents damage if obstacle encountered
- K. All gears in oil-tight case
- L. Oil-tight, streamlined drive case
- M. Pneumatic tyres
- N. Disc wheels pass freely over cut material



EASY-TURN RATCHET DRIVE



POSITIVE DRIVE CLUTCH

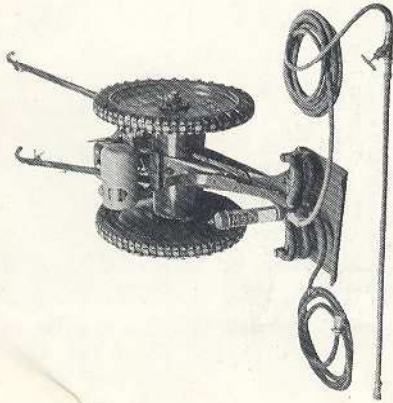


STREAMLINED OIL-BATH GEAR CASE



Orth in every part of the World!

SPRAY PUMP

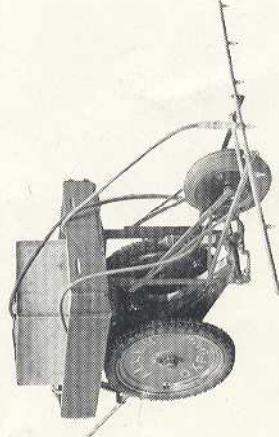


Highly efficient for fruit tree washes, creosote, whitewash, weed killer, disinfectants, etc. Output: 2 gallons per minute. Phosphor-bronze body; stainless steel ground plunger and valves. No glands or running adjustments necessary.

Basic Equipment.—4 ft. duralumin lance. Easyflow tap. Adjustable vortex, and three jet discs.

30 ft. special high pressure hose, and 15 ft. suction hose and strainer.

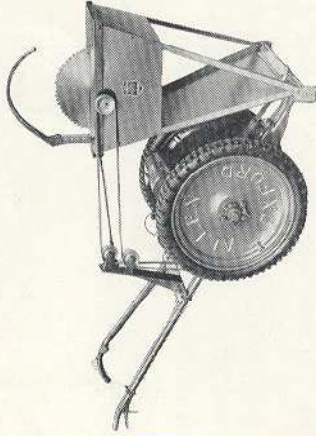
SPRAY BOOM



Designed for use with the 25 gallon Tank and Carrier Attachment and a simple and economical method of applying selective weedkiller.

6ft. tubular boom, fitted with seven renewable jets with individual filters and one master filter. Regulating tap within easy reach of operator.

CIRCULAR SAW



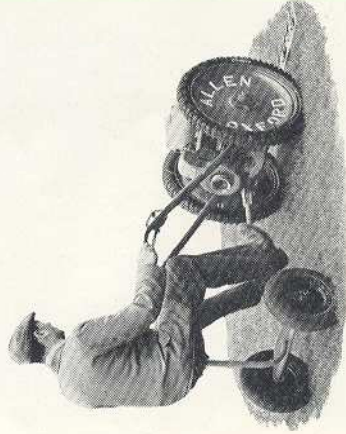
Capable of cutting up to 6 in. in diameter in one passage.

Saw Bench and Power Take Off can be fitted or removed in a few moments, the whole unit being mobile under its own power.

Full 16 in. diameter cross cut saw of best quality, running on ball bearings, protected by oil seals.

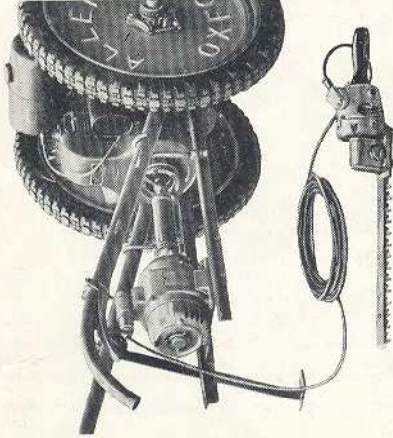
Driven by standard V belt direct from engine. Riving knife facilitates plank or post cutting.

LIGHT TRAILER SEAT



All tubular construction, mounted on 14 in. x 3 in. pneumatic wheels. Adjustable foot rest.

HEDGE TRIMMER



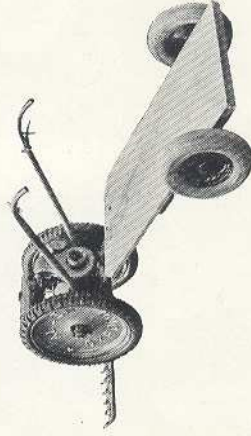
Trims hedges as fast as six people using hand shears.

Driven by a 400 watt generator carried on a Cantilever Cradle which can be fixed in a few seconds.

Powerful, high speed enclosec motor. Steel worm and bronze worm wheel working in oil bath.

Tempered steel blade, 12 in. long, can be sharpened with file. Die cast frame; ball bearings and oil seals. Weight 6 lb.

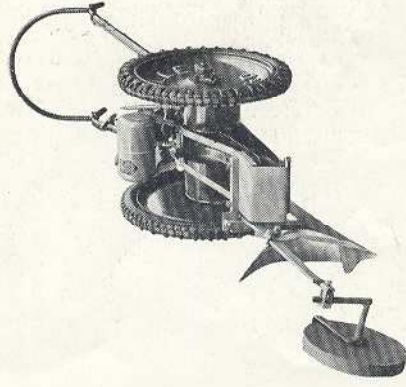
LOW LOADING TRAILER



Indispensable on estates, farms and small holdings.

Platform dimensions, 4 ft. 6 in. long, 2 ft. 6 in. wide. Width over wheels, 3 ft. Ground clearance, 9 1/2 in. Carrying capacity: 3-4 cwt. distributed load. 16 in. x 4 in. Dunlop pneumatic tyres and wheels.

HORTICULTURAL PLOUGH



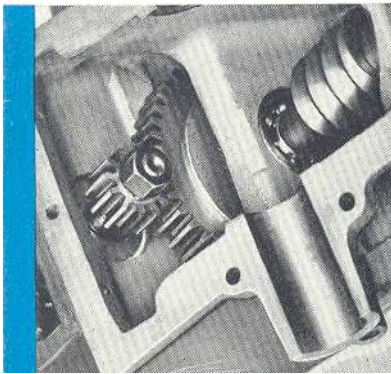
In good conditions ploughing can be done to a depth of 6 in. at an average speed of half an acre in 6 hours. The plough is fully adjustable. Disc type furrow wheel, fitted with scraper. High quality polished steel mouldboard of the general purpose type.

Handlebar extension supplied with Plough.

HOE



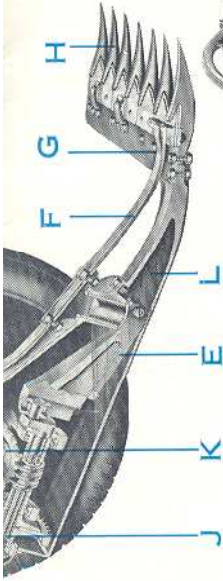
Standard tool bars are 2 ft. in length, but a 3 ft. tool bar is available. Either may be off-set as required. The Light Hoe is supplied with two 7 1/2 in. hoe blades—also available in alternative sizes of 6 in. or 9 in.; 3 in. cultivating tines, and an 8 in. sweep complete the range.



BUILT-IN SAFETY CLUTCH



N



J

K

E

L

F

G

H

OPTIONAL EXTRAS

ENGINES.—The following four-stroke petrol engines are available as alternatives to the two-stroke. Villiers Mk. 15, 147 c.c. bore

63 mm. and stroke 47 mm. 1.9 b.h.p., at 2,400 r.p.m. Villiers Mk. 25, 256 c.c., bore 70 mm. and stroke 66.7 mm. 2.9 b.h.p., at 2,400 r.p.m. This engine can also be supplied for petrol/paraffin if required. Both the above engines are governor controlled and splash lubricated.

OIL AIR CLEANER.—For use in extremely dusty working conditions. Available for both two-stroke and four-stroke machines.

CUTTING UNITS.—Cutting units are available in 2 ft., 3 ft. and 4 ft. widths. The 3 ft. cutting unit is also available for left-hand or right-hand offset. Heavy-Duty Cutting Units with special steel fingers and fitted with wear plates and adjustable plates, are available as alternatives to the standard cutting unit for use under specially arduous conditions.

LONG AXLE.—The 3 ft. long axle allows the wheels to be used not only in the normal position but also in an extended or intermediate position, enabling the machine to be used on extremely steep slopes of 1 in 1, and is also useful for row-crop cultivation.

SWATHBOARDS.—Available for either right, or left-hand fitting to deflect the cut material away from the standing crop.

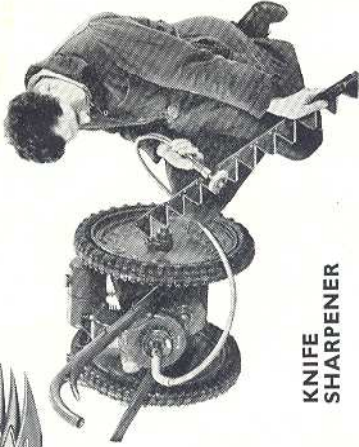
UNIVERSAL FOOT.—By means of a very simple adjustment this allows a 2 ft. or 3 ft. central cutting assembly to be adjusted

so that the points of the fingers are lowered towards the ground, making for closer and more even cutting. The cutter bar also pivots.

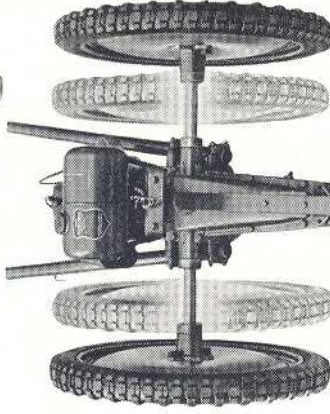
DRAWBAR.—A simple fitting enabling the Trailer Seat, or any suitable type of Trailer, to be drawn behind the Motor Scythe.

WATERPROOF COVER.—Made of heavy, rot-proof canvas, fully protecting the machine against the elements when left in the open.

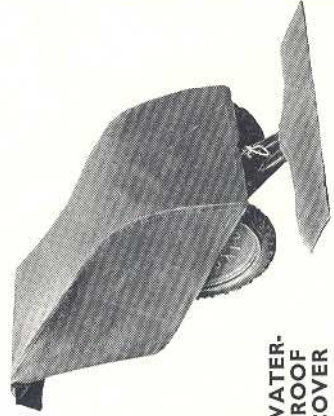
KNIFE SHARPENER.—Consists of a 3 in. emery wheel driven through a flexible shaft direct from the engine crankshaft, enabling the cutting blades of the Scythe to be kept in perfect condition.



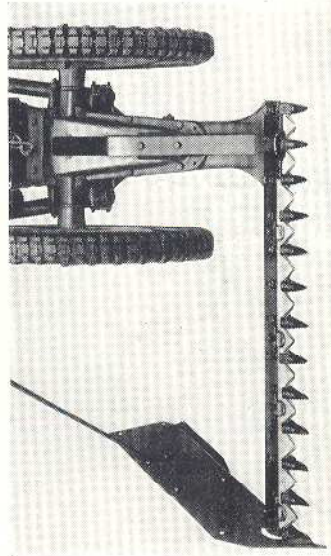
KNIFE SHARPENER



EXTENDED AXLE

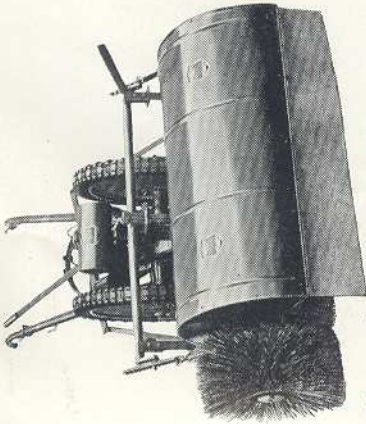


WATER-PROOF COVER



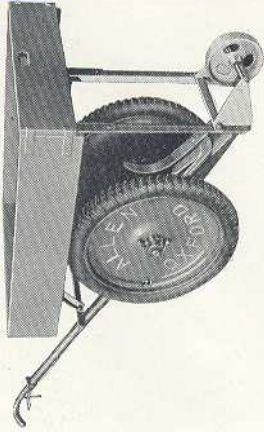
OFFSET CUTTER BAR AND SWATHBOARD

ROTARY BROOM



Clean and effortless sweeping of yards, drives, footpaths, streets, parade grounds and lawns. 7 brush sections replaceable at low cost. Width of sweeping: approx. 4 ft. with extension broom.

CARRIER



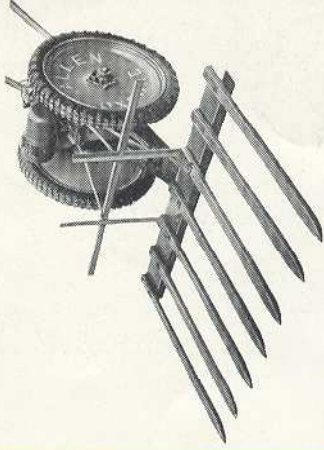
Framework of strong steel angles, cross braced and carrying seasoned wood box top. Tongued and grooved base boards protect engine when carrying loose materials. Inside dimensions of box top: 3 ft. 4½ in. x 2 ft. 4½ in. x 6 in. deep. Carrying capacity: 3 cwt.

JABSCO PUMP



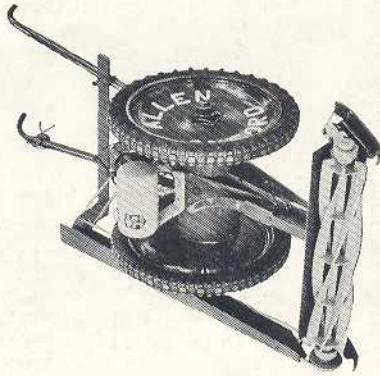
Simple in operation; self priming; no foot valve required. Will pump over 1,000 gallons per hour.

HAY SWEEP



Will deal with areas up to 4 acres per day. Four nuts and bolts hold it in position. The wooden tines lift hay cleanly and carry it without any exertion on the part of the operator.

30 in. GRASS CUTTER



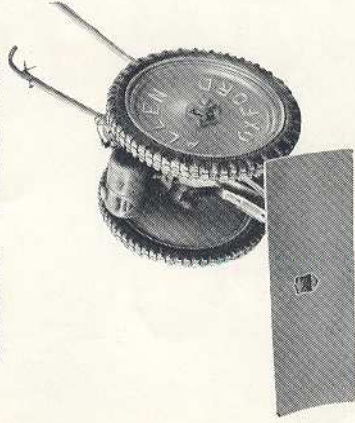
Of robust construction with heavy blades and sole plate. Cutting width 30 in. No grassbox supplied.

LIGHT BULLDOZER



Ideal for cleaning cow yards, Danish type pighouses, etc. Dimensions (with extension wings): approx. 3 ft. 6 in. wide x 18 in. deep. Wings removable for narrow passages. Rubber squeegee edge or steel edge can be used at will.

SNOW PLOUGH



Quickly clears any normal fall. Easily fitted with the three bolts and nuts which normally hold the cutting assembly. Blade can be set at 30° left or right. Height of Blade 12 in., width 3 ft., giving clearance of 2 ft. 7 in.

TRAILER ROLLER



Comfortable seat. Single bolt attachment. Four close-grained cast iron rollers, machined parallel over the top give smooth rolling surface. Free running on steel axle, easy to lubricate.

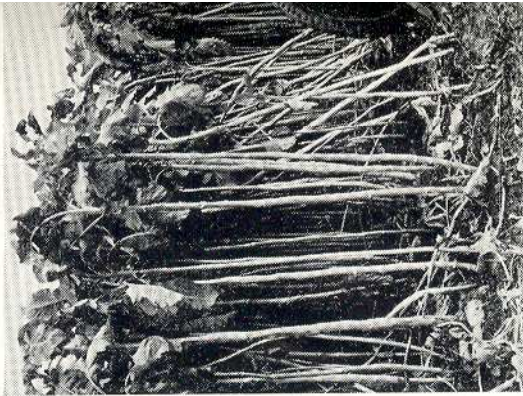
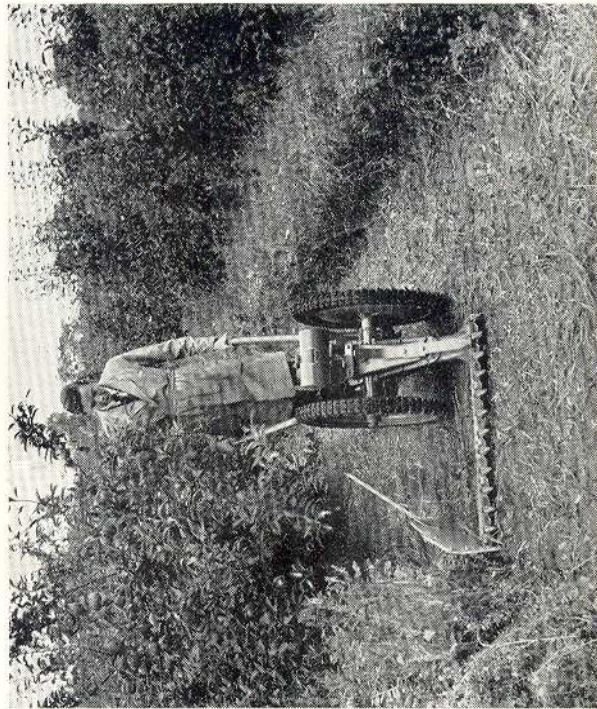
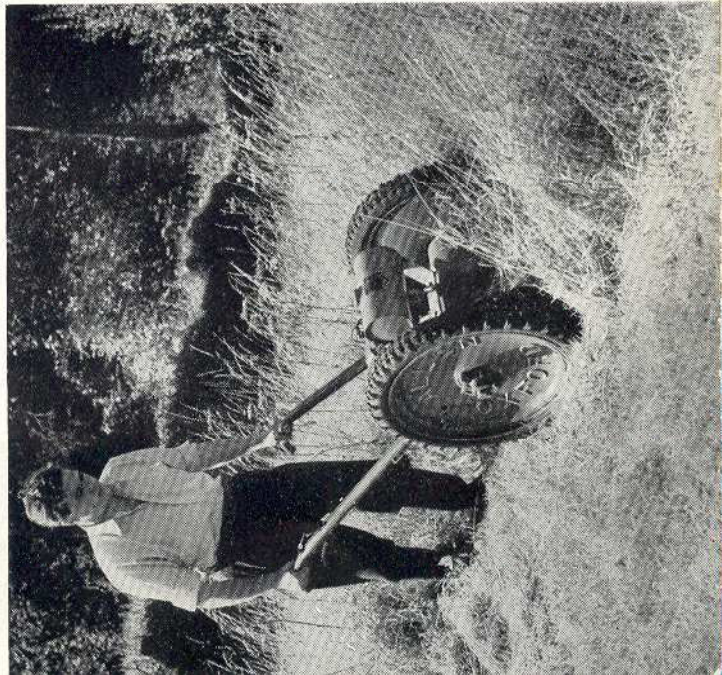
There is always a job for your ALLEN

THE ALLEN

British throughout, the Allen Self-Propelled Motor Scythe is built by skilled engineers in our factory at Cowley, Oxford, and incorporates the supreme advantages gained by over 25 years' experience in its manufacture and use.

Designed for cutting all kinds of rough, dense growths, it will work continuously where no other machine can operate. It climbs without difficulty steep reservoir and railway embankments; it cuts cleanly long grass, weeds, bracken, brambles, rough matted and tangled growths, besides many kinds of cultivated crops.

THE LARGEST MANUF



MOTOR SCYTHE

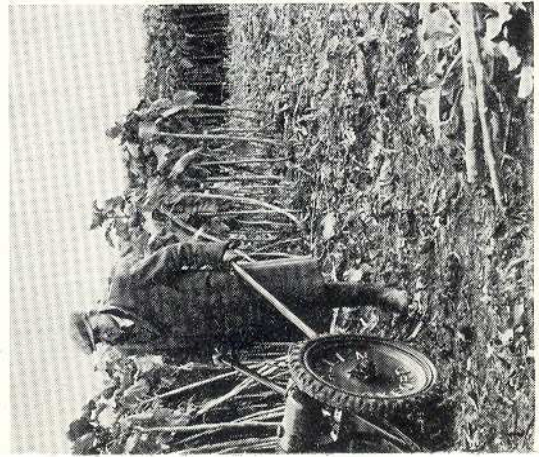
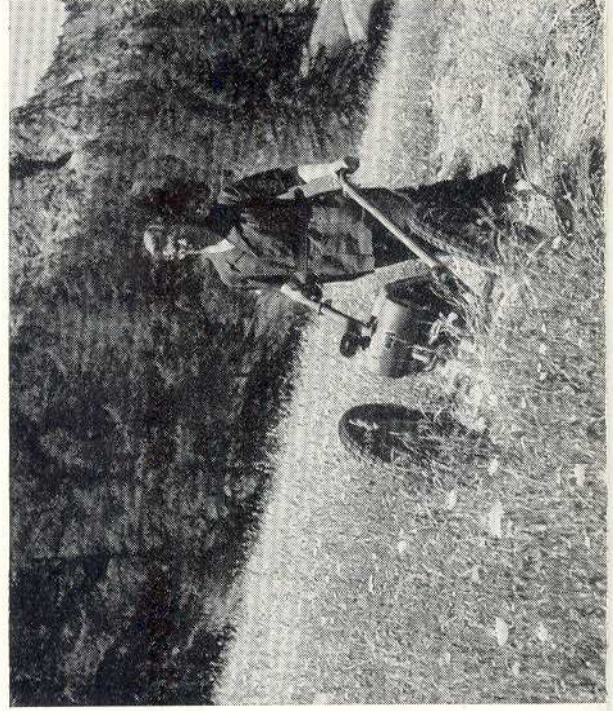
All over the world you will find the Allen Motor Scythe carrying out the toughest jobs with high and effortless efficiency, without the necessity for skilled labour.

The sturdy Villiers engine (two-stroke or four-stroke available), operates both cutting mechanism and machine, giving ample power for steady, even work in dense growth.

Special attachments enable the Allen Scythe to be used for an endless variety of tasks giving all-the-year-round service.

Let the ALLEN cut YOUR labour costs!

ACTURERS IN THE WORLD



ALLEN MOTOR SCYTHE MODEL T.S.

ALLEN SELF-PROPELLED MOTOR SCYTHE STANDARD MODEL T.S.

Fitted with Villiers Mk. 25C two-stroke engine ; central or offset 3 ft. or 2 ft. standard cutting assembly ... **£94 15 0**

ALTERNATIVE EQUIPMENT FOR ABOVE MACHINE FITTED IN PLACE OF STANDARD EQUIPMENT

	£ s. d.	Attachments for Allen Self-propelled Motor Scythe—continued	£ s. d.
4 ft. Standard Cutting Assembly	(extra) 3 0 0	30 in. GRASS CUTTER	39 15 0
2 ft. Heavy-Duty Cutting Assembly	" 5 0	GENERATOR, 400-watt complete	23 0 0
3 ft. Heavy-Duty Cutting Assembly	" 6 0 0	For use with above :—	
4 ft. Heavy-Duty Cutting Assembly	" 5 10 0	Hedge Trimmer	17 10 0
3 ft. Fine Cutting Assembly	" 3 0 0	Hedgemaster	35 0 0
Long Axle	" 17 10 0	Grassmaster	13 10 0
Villiers Mk. 25 four-stroke engine (256 c.c.)	" 11 0 0	Vergemaster	16 10 0
Villiers Mk. 15 four-stroke engine (147 c.c.)	" 1 17 6	GENERATOR, 900-watt, complete	34 0 0
Oil-type Air Cleaner for two-stroke machines	" 2 4 6	Chain Saw, for use with above	39 10 0
Oil-type Air Cleaner for four-stroke machines	" 4 15 0	HOE, complete with pair of standard Hoe Blades	6 0 0
Universal Foot (for 3 ft. centre cutting assembly)	"	Handlebar Extension	18 6

EXTRA BLADES

2 ft. Standard Blade, centre cut only	1 4 0
3 ft. Standard Blade, centre or offset cut	1 7 6
4 ft. Standard Blade, centre only	1 15 6
2 ft. Heavy-Duty Blade, centre only	1 15 0
3 ft. Heavy-Duty Blade, centre only	1 18 0
4 ft. Heavy-Duty Blade, centre only	2 10 0

ATTACHMENTS FOR ALLEN SELF-PROPELLED MOTOR SCYTHE

BROOM with extension, reversible throw	49 15 0
Dust Shield for above	5 17 6
BULLDOZER with side extensions	15 10 0
CARRIER—For two-stroke machine	13 10 0
For four-stroke machine	14 10 0
Tank, 25 gallon for above	7 0 0
CIRCULAR SAW BENCH	27 0 0
CUTTING UNIT COMPLETE, STANDARD—2 ft.	6 15 0
3 ft.	8 15 0
4 ft.	11 15 0
CUTTING UNIT COMPLETE, HEAVY-DUTY—2 ft.	9 0 0
3 ft.	11 15 0
4 ft.	14 15 0
CUTTING UNIT COMPLETE, FINE—3 ft.	14 5 0
DRAWBAR HITCH PLATE—Two-stroke machine	18 0
Four-stroke machine	1 5 0
30 in. GRASS CUTTER	39 15 0
GENERATOR, 400-watt complete	23 0 0
For use with above :—	
Hedge Trimmer	17 10 0
Hedgemaster	35 0 0
Grassmaster	13 10 0
Vergemaster	16 10 0
GENERATOR, 900-watt, complete	34 0 0
Chain Saw, for use with above	39 10 0
HOE, complete with pair of standard Hoe Blades	6 0 0
Handlebar Extension	18 6
Jalo Seeder	5 15 0
Marker	1 10 0
HAY SWEEP	6 10 0
JABSCO PUMP, complete with 15 ft. suction hose and strainer	30 15 0
KNIFE SHARPENER	9 15 0
PLOUGH (Horticultural)	14 10 0
Spud ring for above	(each) 4 17 6
SPRAY PUMP, without Spraying Equipment or Pressure Gauge	29 5 0
Standard Equipment, consisting of 4 ft. Lance, 30 ft. Spraying Hose, 15 ft. Suction Hose with strainer and all connections	9 16 6
Pressure Gauge	2 7 6
Spray Boom	16 0 0
SNOW PLOUGH	4 5 0
SWATHBOARD, right or left-hand	1 11 0
TARPEN-STRAND CHAIN SAW, complete with 10 ft. flexible drive and power take-off attachment (no generator required)	38 16 0
TRAILER SEAT (light tubular)	11 15 0
TRAILER SEAT (heavy)	16 5 0
TRAILER ROLLER and DRAWBAR	31 15 0
Set of four rolls to convert heavy Trailer Seat to Roller	20 0 0
TRAILER (low-loading)	10 0 0
UNIVERSAL FOOT, complete with Rocker Spring, patent adjustable pads and 3 ft. spare blade	7 10 0
WATERPROOF COVER	3 10 0

All prices quoted in this list are at Works, packing and carriage extra.

We reserve the right to change specifications and prices without notice.

MANUFACTURED BY

JOHN ALLEN & SONS (OXFORD) LTD.

COWLEY · OXFORD

Telephone : OXFORD 77155/6/7

Telegrams : ALLENSON, OXFORD