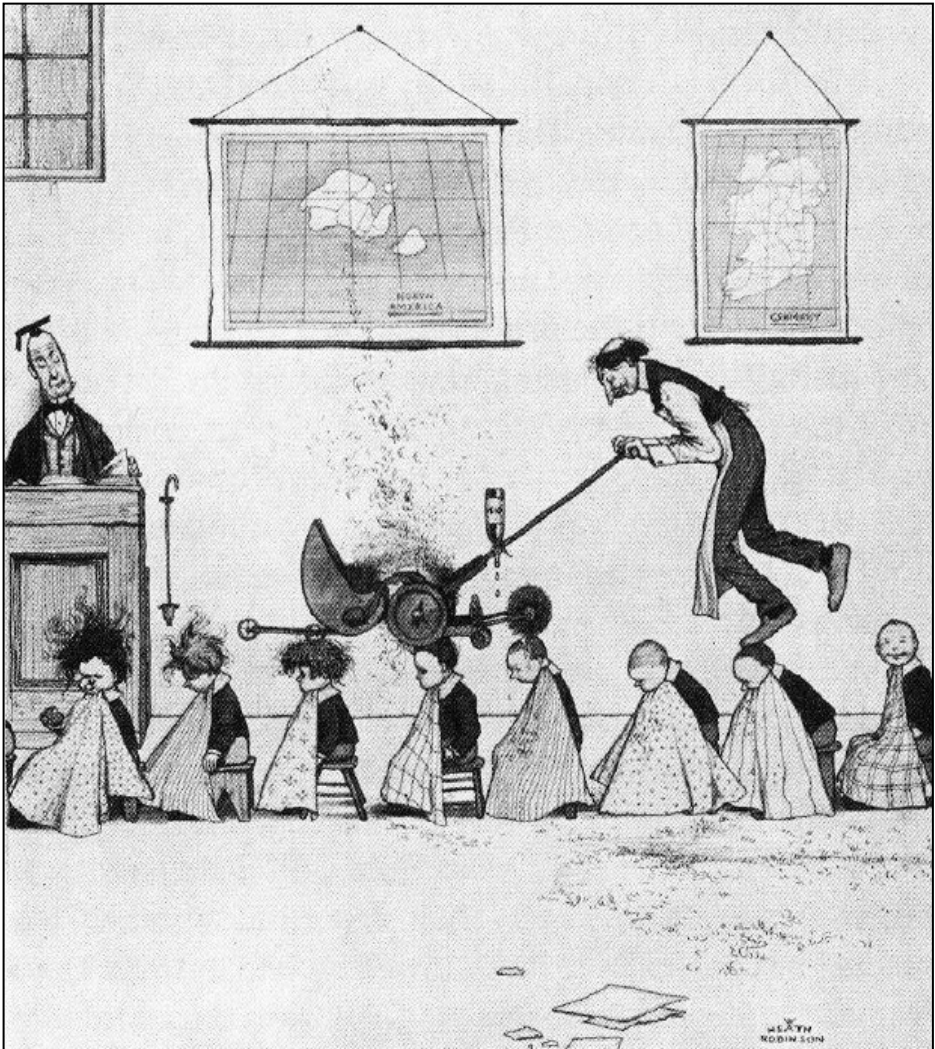
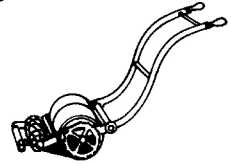


# Grassbox

*The magazine of The Old Lawnmower Club*

Number 120

Autumn 2022



## EDITORIAL

Welcome to Grassbox 120. Compiling this issue has proved to be rather a protracted affair, which I'm afraid has meant that it will be arriving with you rather later than I would have liked.

This issue carries a number of reports about the various shows that members have attended during the summer, and it is wonderful that we have been able to return to a full rally season at last. I realised looking back through past issues recently how many newer members we are seeing at events now, many of the regulars today being entirely different to those of ten years ago. I think this shows the continued interest that there is in the club; we are very lucky that lawn mowers are a subject that is still current as well as one from the past, so we are blessed with continuing new interest as people continue to use mowers in the daily lives.

Mower collecting remains a cheap hobby too. Very occasionally a real rarity from the Victorian era comes to the open market, but as we see every year at the club auction most old mowers only change hands for a few pounds.

Unlike a number of other collecting societies, the OLC boasts a growing membership, and the lockdowns caused a huge increase in interest as people stuck at home searched the internet for more information about the old mower in their garage.

I have been lucky as well that one or two of the newer members have produced articles for the magazine, as ever though I would like to appeal for more, but also thank those who have contributed over the last few issues. With a young family and other time pressures it is harder for me to fill up the gaps in the magazine than it used to be, so the more others write the better!

## LES HARRISON

I am sorry to report the death earlier this year of Les Harrison from Northampton. Les was one of the first members to join our club and served on the committee for a number of years in the 1990s and early 2000s. Ill-health limited his participation in club affairs in recent years. I am sure every member will want to join me in offering our condolences to his family and friends. **Keith Wootton**

*Front Cover: Hair Cutting at Eton by W. Heath Robinson.*

**Next Edition: Winter 2023**  
**Edition 120 Edited by William Proudfoot**

## CONTACTING THE CLUB

**Chairman:** Bernard 'Robbie' Robinson, 79 Templar Road, Oxford, OX2 8LY.

T: 01865 450899 E: [bernard.robinson@oldlawnmowerclub.co.uk](mailto:bernard.robinson@oldlawnmowerclub.co.uk)

**Secretary:** Alec Hillyar, Field House Farm, Watford Road, Crick, Northamptonshire NN6 7TG T: 01788 822224 E: [al.h@mail.com](mailto:al.h@mail.com)

**Treasurer/Club Renewals:** Contact President, Keith Wootton, see below.

**Garfitts spares:** Richard Jones, 13 The Avenue, Hambrook, West Sussex, PO18 8TZ.

T: 01243 575937 E: [lawnmower.jones@hotmail.co.uk](mailto:lawnmower.jones@hotmail.co.uk)

**Souvenirs/Regalia:** Colin Stone, Home Farm, St. Michael South Elmham, Bungay, Suffolk, NR35 1NF. T:01986 783870 E:[stonethemows@btinternet.com](mailto:stonethemows@btinternet.com)

**Editor:** William Proudfoot, The Old Windmill, Throwley Forstal, Faversham, Kent. ME13 0PJ. T: 07712 229714 E: [wproudfoot81@gmail.com](mailto:wproudfoot81@gmail.com)

**President:** Keith Wootton, 9 Blisworth Road, Gayton, Northampton, NN7 3YT: T:01604 859402 / 07778 315966 E: [keith.wootton@oldlawnmowerclub.co.uk](mailto:keith.wootton@oldlawnmowerclub.co.uk)

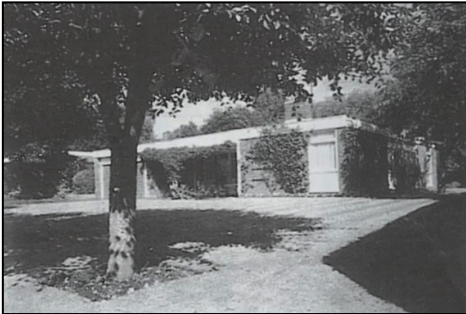
# BRITISH LEYLAND MOWER?

By Alistair Kinross

Sir Alexander Arnold Constantine Issigonis, CBE FRS RDI (1906-1988) (*right*), the designer of the Morris Minor and the Mini lived with his mother Hulda in a large bungalow at 12 Westbourne Gardens, Edgbaston, (*image below*) complete with a model steam railway around the garden. A few weeks after



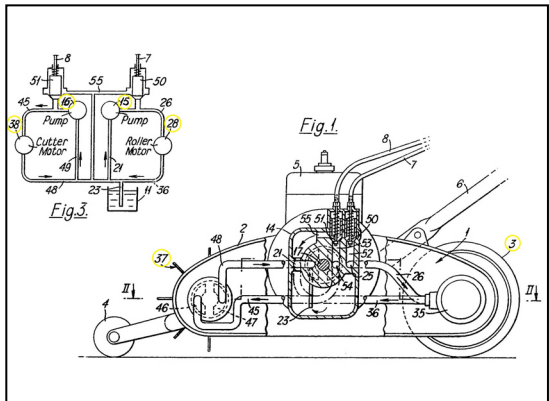
traction roller of a petrol-engined lawn mower, which his gardener used to cut the grass. Fellow Mini designer John Sheppard recalled that, like the hydrostatic gearless Mini Alec was developing at the time, it also leaked oil, being unable to contain the high pressures, killing most of the grass.



The patent describes how a power-driven mower has a hydraulic transmission with two pumps (15 & 16) independently supplying motors (28 & 38), which respectively drive independently the cutter (37) and the traction roller (3).

I wonder where the mower is now? The patent has long since expired, but it was still cited by Black & Decker in 1999.

his trip to be knighted at Buckingham Palace he filed a patent along with Bernard Hooper of Norton Villiers Ltd., Marston Road, Wolverhampton on 9 Aug 1969. This patent was awarded as GB1254912A on 24 Nov 1971, the same month that he retired from British Leyland. According to "The Man Who Made the Mini," by Jonathan Wood, he applied the hydrostatic principle to independently drive the cylinder and



# BENT CUTTERS

By Clive Gravett



At first glance this piece of machinery may appear to be some sort of reaper, however it was designed for the more delicate operation of cutting 'Bents' on fine turf, golf greens etc. The 'Bents' referred to being the long, tough, grassy stems which escape the ordinary lawn mower.

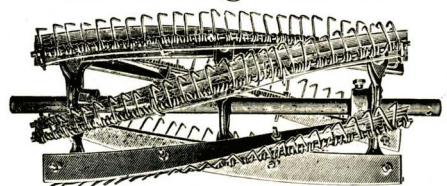
Introduced by Ransomes in 1906, having a 24 inch cutting width, described as easy work for one man! Having used ours I have my doubts as to how 'easy' it was, the operation requiring the machine to be accurately balanced to avoid the blades digging in, whilst having to exert a hefty push due to the weight. Cost in 1906 was £3.

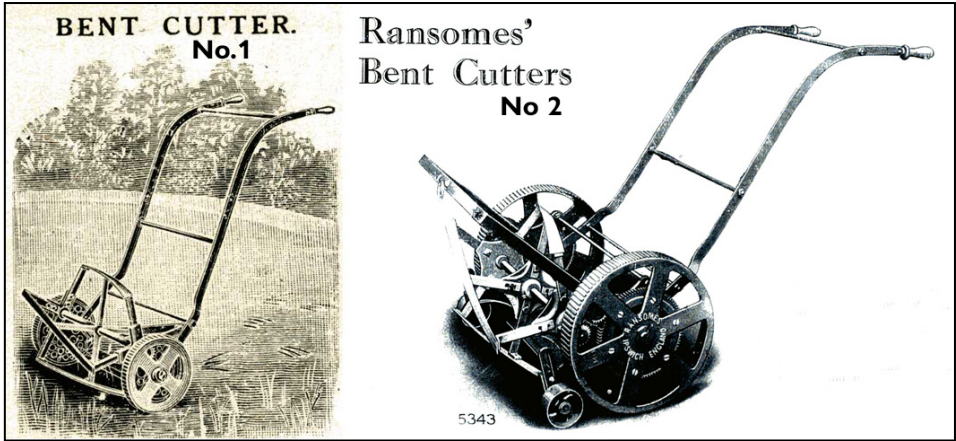
In 1916 a No.2 model was introduced, I assume to overcome the difficulties, fitted with larger driving wheels, together with small jockey wheels to control

the height. In addition a draw bar for two people to operate.

In 1910 Ransomes introduced an attachment for existing mowers for the cutting of bents, (see image) this consisted of a series of hooks fitted at the back of each blade, these would bring the 'Bents' towards the knives and hold them until cut. I have only found reference to these attachments in the 1910 and 1911 catalogue, so perhaps not successful.

## New Patent Attachment for cutting "Bents."





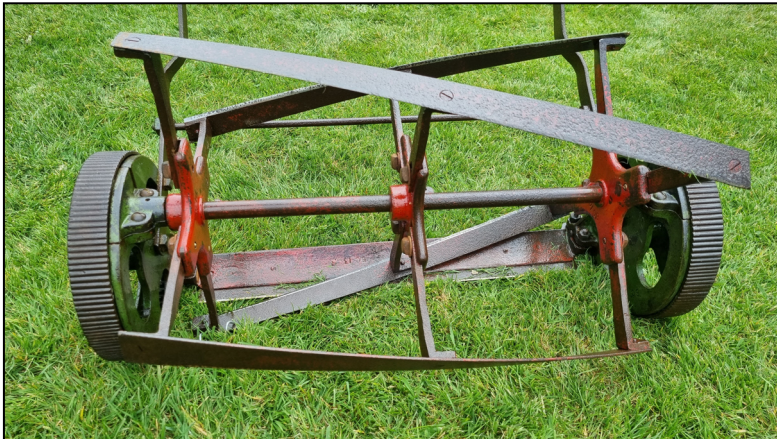
Our machine, a No.1 model, was found in Portsmouth, having been previously owned by an Admiral, possibly used on his croquet lawn and tennis courts. I show images of the 'as found' condition and after a thorough clean and treatment with preservative, also a copy of the catalogue image of both models.

This machine is extremely rare especially with the amount of original paint that remains. I know of only one other, also a No.1, belonging to Christopher Proudfoot. This example has sadly suffered quite severe rusting at some previous point in its life and is repainted.

*When I saw this article from Clive I thought that I had written something on the subject of bent cutters before. After much searching I discovered that I had; it was a small addition to an article by the late Tony Hopwood in the Summer 2011 edition, so it was a while ago!*

*Another point to note is that the pinions in this machine feature the same rather odd rocking pawl arrangement that the Anglo Paris has, this is a far more effective system, and much less prone to wear, than the normal sliding pawl used by most side wheelers including many others of those made by Ransomes.*

**Editor**



# PEOPLE WERE SHORTER IN THOSE DAYS....

By William Proudfoot

... Or were they? One of the more puzzling aspects of old lawn mower design was the failure of so many manufacturers, especially before the First War, to make the handles of their products a suitable height for the average human to use. Now of course the average isn't much good for the vast majority of people who are shorter or taller. More to the point I suppose therefore, why were handles not adjustable to suit the varied height of the human frame?

So firstly, which companies were particular offenders? Well, our old friend Greens was by far the worst and most persistent, as their handles were never adjustable until the late style Multum In Parvo was introduced in the mid Edwardian period. Their main product, the Silens Messor did not acquire adjustable handles until the 1920s. Other companies also had fixed position handles,

such as Follows and Bate, but the Chain Tennis has its handles fixed a few inches higher than those of an SM. If you've ever tried to use a Silens messor and are more than about 5'5 in height you will know what the problem is. It is back breaking work pushing a hand mower when you have to bend over to exert a useful force on the handles.

These two Victorian images show the problem, in the first the man with his early Silens Messor has his arms extended straight down to reach the handles when standing upright, so to push it would be bent over somewhat. In the second image (*facing page*), this poor chap is shown bent double pushing his mid Victorian hand mower, (possibly a Shanks, I've not managed to identify the model). Incidentally the location is also unknown; it appears to be a ruined

castle of some sort, maybe in the Welsh Borders.

In fact most contemporary images show the operator to be struggling with their diminutive mowers, which leads us to the next question, how much shorter were people "in those days"? Average height in late Victorian Britain seems to have been about four inches or so less





cannot imagine. Yet the sales of Silens Messors increased in Edwardian Britain, in spite of the competition provided by Automaton and other competitors that allowed for a healthier posture. Both Greens and Follows & Bate allowed the hand grips at the top of the handles to swivel up and down, but this doesn't real-

ly help much, swivelling them up just puts them at a really unsuitable angle. However, as these old pictures (and countless others) show, a lot of mower handles were too low even "in those days".

The image below shows a 12 inch Patent Chain Automaton and a 12" Silens Messor, both later examples of their type from the early 1920s. The Automaton has its handles on their maximum height, which is 6½ inches above those of a Silens Messor. If you set the handles so that they line up perfectly with the frames at the adjustment point, then they are about an inch above the Greens ones, while the lowest setting is 4 inches below the Greens, handy if you have a particularly strong 5 year old, but little else. It is worth recording that they are both set to about the same cutting height, the positioning of the front roller has a big impact on the height of the handles.

So the next question; why were the handles of lawnmowers not adjustable? Ransomes Automaton of the early 1880s, in their final form before the introduction of the New Automaton, do have adjustable handles, and the same basic handle casting and mounting hole positioning was still being used on motor mowers in the 1930s. How much say the gardener had over the make of machine he was provided with is somewhat doubtful, but why anyone of average height or over would have opted for a mower that gave you back ache I

ly help much, swivelling them up just puts them at a really unsuitable angle. The image below shows a 12 inch Patent Chain Automaton and a 12" Silens Messor, both later examples of their type from the early 1920s. The Automaton has its handles on their maximum height, which is 6½ inches above those of a Silens Messor. If you set the handles so that they line up perfectly with the frames at the adjustment point, then they are about an inch above the Greens ones, while the lowest setting is 4 inches below the Greens, handy if you have a particularly strong 5 year old, but little else. It is worth recording that they are both set to about the same cutting height, the positioning of the front roller has a big impact on the height of the handles.



All in all I suspect that little consideration was given to the comfort of the operator, and in a different age such issues were of little significance to sales. Gadgets such as reversible cylinders and hand adjusters were the real selling points pushed by mower makers.

# ROYAL ENFIELD TRAVELS

By Andreas Papadakis

I am writing to club's magazine to share with you my happiness. A dream come true and I am the owner of a late 30's Royal Enfield lawnmower!

Since 2005 I have owned a Royal Enfield motorcycle. It was a love at the first sight! Over the years since, Royal Enfield history has been my passion, and in 2018 I bought a Royal Enfield bicycle. During the Covid period I started to search for a Royal Enfield lawnmower to add to my collection of the company's products, and this led me via the web to the Old Lawnmower Club UK of which I become member.

I spoke several times with Club's President Keith Wootton and told him of my interest in buying a RE lawnmower. I cannot describe how much Keith helped me to my research. His passion was enormous.

After some failed attempts I got an email from him in May 2022 telling me that there was a member who was interested in selling his lawnmower at the annual rally. The man in question was Ted Sutton (*below right*) from Banbury. Ted and I spoke several times and he had a lot of great stories to tell me. Not only of lawnmowers of course but of a lifetime of memories. I shared with him my interest to buy his lawnmower. Ted was convinced to sell it to me and I am sure that Keith helped a lot with that!

A good friend of mine undertook to deliver it to me in Greece, and finally, the lawnmower arrived here, via Cyprus, last week, so now I am a proud owner of a Royal Enfield lawnmower.

I would like to thank again Ted Sutton, Keith Wootton and the club for all their efforts.





# SHUTTLEWORTH STEAM, AGRICULTURAL & VINTAGE WEEKEND 2022

By Roger Wilkinson

Last year was the Shuttleworth try-out for this style of event that also includes an airshow on the Sunday afternoon. They must have liked our OLC display then because we were asked back for this year's show on the 3<sup>rd</sup> and 4<sup>th</sup> September. The event this year was larger and had more steam attending – full size and scale – and many really classic vehicles. Saturday was relaxed and Sunday busy with quite a few visitors to our display, both inside the marquee and for the mowers spread around outside. We also had a large area of grass that would have been nice to mow had it not been brownish and bare. At least it was not too bumpy when we motored up and down it.

Nine club members came with their mowers – Alec Hilyar, Andrew Grout, Clive Gravett, Daniel Mortimer, James Rudlin, John Truluck (with Cherry and son David) Richard Jones (with daughter Emily) Rod Child (with Linda) and

me with Helen and our two eldest grandsons, Alec 9 and Sam 6 Clive brought loads of interesting mowing items from the South Downs Heritage Centre and they really made the display around two of the marquee walls and down the centre of the marquee look more than good. How he gets it all stacked away inside his truck is fascinating to watch!

Andrew displayed his three “Bedford” series of lawnmowers - for the first time I think. They were made by Watkinson & Co, late of Priory Street in Bedford. The photo (*below*) shows Clive taking a photo of Andrew with the Bedford mowers!

The Red Arrows and the Lancaster scrubbed from the air display – we were told because of the weather – but we had it warm and fine for both days with only about ten minutes of spotty rain. The public did get to see some formation mowing however. John Truluck on

his Anzani and me on my Dennis side by side all the way from our display area to the restaurant and back, along the front of all the hangars and on noisy tarmac! We enjoyed it so much and raised so many smiles that we did it again later in the day. I've already been told that Shuttleworth would like us back for 2023.



# RALLY REPORTS

By Keith Wootton

## Banbury 2022

A small contingent of members attended Banbury Steam Rally at the end of June to continue our participation at this event which stretches back to the early 1990s. The rally, like many others, was back for the first time since 2019 and for various reasons was scaled down slightly from the size of previous events. Because of this we were sharing



a marquee with some model makers rather than having our own tent. Nevertheless, we were able to fill our allotted area (and use some space outside) with a nice selection of machines. Barrie

Sowerby found a novel way to transport his mowers to and from the marquee using his scale-engineered traction engine (above). The event was well attended and there was a lot of interest

from visitors, including a number of old friends. Thanks to Robbie for organising, as always, and for leading the team over the weekend.



## Bedford 2022

Another show back after a break this year was Bedfordshire Steam Rally. Having decided to relocate to a new venue after the 2018 event, the organisers had already planned a break in 2019 so this was their first rally for four years. The new

venue was excellent with a more compact layout than the previous venue. As always, we were sharing a marquee with the modellers. Many of our usual “Bedford” team were there although a few were missing for a variety of reasons. Attending for the first time, Mike and Paul Harvey brought a selection of Silens Messors (*opposite page, bottom*) to add to the display. John Truluck (British Anzani Lawnrider) and James Rudling (Ransomes motor mower) were stars of the “play pen”, one of the event’s parade rings. Spotted elsewhere at the show was a rare appearance on a 1930s Atco Car and 1960s Ransomes Triple ride-on. Star of the show, however, was probably “Freddy”, Andrew Grout’s bloodhound who attracted more attention than any of the mowers.

## Malvern 2022

Our annual end-of-year event at Malvern was held, like last year, over three days at the end of September. The majority of our usual contingent was present to display a wide range of mowers from the Victorian to Elizabethan eras. Many of these were demonstrated in our working area at the front of the tent. The largest of these was Robin Maitland’s Ransomes ride-on which was demonstrated regularly throughout the weekend and attracted a lot of interest (*image below*). Robin was also pleased to take delivery of the Atco Standard he won in the raffle at our Annual Rally in May (*image, page 12*). A few of the team managed to get it working during the weekend.





learn from this to enhance future events. A few of us also had a go at croquet for the first time, thanks to a set Robin had brought along. Games and sports like this probably grew in popularity, and in fact might only have been possible, because of the availability of the mower in the second half of the 19th century.

Our display included an interesting selection of Shay equipment and other garden tools brought by Jan & Ray Williams and Dave & Anne Price. Alec Hillyar, Paul Channon, Daniel Mortimer, Paul & Mike Harvey, Neil Burke, and Laura Harper all contributed an excellent selection of machines to complete the display. Thanks

Another interesting exhibit was Bruce Bentley's display showing how a two man Silens Messor would have been used, based on a setup incorporating full-sized figures he had previously used to demonstrate sheep-shearing equipment (*image below*). It was a novel idea that showed how to bring a bit of life to an otherwise static exhibit. There is perhaps something we could all could

to everyone who was able to attend. We would love to see a few more members joining in next year.

Our display was part of the event's growing vintage section. We were located next to the one organised by the Vintage Garden and Horticultural Machinery club and it was good to meet up with friends and fellow OLC members on their stand.



# MIKE TOMKINS' MECCANO MOWER

By Keith Wootton

Mike Tomkins got in touch after seeing the item and photo of the Meccano mower in the last Grassbox. As many members will know, Mike has an extensive collection of toy and model mowers. Mike says that he has one made from Meccano in his own collection.

Apparently, this was made for him by Sid Beckett, a well-known Meccano enthusiast (easily found on Google). According to Mike, Sid actually made two mowers: one with red and green components (the one Mike has) and one with yellow components. Could this be the one that Clive found? I looked for a photo of Mike's model and the only one

I could find showed it amongst several other mowers on a display our annual rally some years ago. The image is small but it seems that Mike's model is smaller than Clive's.

Interestingly, Meccano published a number of designs for roller and side-wheel lawn mowers in their manuals from the late 1920s through to the 1960s (with some more basic designs even appearing as late as the early 1980s), all built using standard parts. None of these appear to be quite the same as the models that Clive and Mike have.

---

## CLUB SERVICES AND INFORMATION

### CLUB SHOP

The Club Shop, run by Colin Stone, continues to be open as normal. This is an ideal opportunity to purchase Club Clothing, Transfers, Souvenirs and Books for those not able to attend the Annual Rally/AGM. All items for sale can be seen on the website in the Members Section.

**Newly introduced:** Club T Shirt, Club Logo Roundel and Webb transfers. Suffolk Colt transfer reduced from £14.00 to £8.00. Some earlier Souvenirs available at bargain prices. Contact Colin Stone, ideally by email: [stonethemows@btinternet.com](mailto:stonethemows@btinternet.com) Other contact details inside front cover. Please quote your Membership number.

It's a simple process; price and availability will be confirmed before proceeding.

### RENEWALS

Membership notifications were sent out during September to everyone who was due to renew this year. Our membership database is up to date, so if the address label that was used to send you this copy of Grassbox contains the words Until:2022 you still need to renew your membership. You can find all the information you need on the email or letter we sent you at the time. If you cannot find this and still want to rejoin, contact Keith for more details.

If the address label says anything other than Until: 2022 you do not need to

renew this year and you won't have received a notification.

Remember, we process all membership renewals at the same time each year because this is simpler for the club and the people who are doing the work.

## ANNUAL RALLY 2023

Next year's Annual Rally will be held on the weekend of Saturday 20 and Sunday 21 May. We'll be providing more details nearer the time but please put the date in your diary now. The event is going to be special because Milton Key-

nes Museum will be celebrating its 50th anniversary next year. They have asked us to make a special effort to help with their festivities. As many of you know, we formed the club after an event at the museum in 1989 and held our first official rally there in 1990. We have been holding our rally there ever since and it is perhaps the museum's longest standing regular event. It would be great if we could get a really big turnout to help them celebrate this major milestone.

---

# ADVERTISEMENTS

## FOR SALE

Part of lawn mower collection. Any sensible offer, please email for more details. Ride-on mowers x 4; various motor mowers; various hand mowers. Allready for restoration. Sale for by poor health. C: Ian Warham T: 07752 000928 E: ianwarham@yahoo.co.uk (Winkleigh)

30" Atco Royal B30 ride-on, c/w B&S 5HP engine, £400 or nearest offer C: Don Simpson T: 07722 009646 E: donsimpson28@gmail.com (Burton on Trent)

17" Suffolk Punch, c/w box; 17" Suffolk Punch Dual Drive, c/w box; 12" Suffolk model 24a, c/w box. C: Robert Routledge E: robertroutledge@msn.com (Doncaster)

24" Dennis, 1935, number 11580, restoration nearing completion, £200; 24" Dennis, 1926, unrestored, rectangular petrol tank, number 5283, c/w Blackburne engine, FTGH; 30" Dennis, 1929, number 8067, unrestored, FTGH; 30" Dennis, 1952, number 167Z29, incomplete, for spare parts, FTGH. Available singly or as job lot. C: Martin Bingham T: 01777 817026 E: bingham053@gmail.com (Lound)#

Atco De Luxe, 1930s, c/w "straight-through" kick-start, c/w Villiers 2S no CYA404, mower in parts but complete except for air filter and grass box. Sale price to March & Chatteris MacMillan Cancer Support. C: Robert Freeman T: 01354 656569 E: thejollyjester@onetel.com (Yorkshire)#

12" Ransomes Ajax Mk5, 1970, c/w box, £100 C: Emma Casey T: 07789 661199 E: emmajcasey@yahoo.com (Camberley)#

30" Dennis, 1960s, c/w Dennis engine, c/w box, £250.00 C: John Lloyd T: 07847 553439 E: jlloyd19@btinternet.com (Bromley)# 12" Ransomes Atlas Mk1, £20 C: Hilary Prescott T: 07711 751662 E: hilaryprescott@gmail.com (Southampton)#

14" Atco Commodore B14, 1991, c/w Mitsubishi G221P-LSA engine, c/w box, donation to local foodbank C: Janet Calderbank T: 01934 838240 E: janet@calderbank88.plus.com (Clevedon)#

18" Webb AB1476, 1973+, c/w B&S engine, c/w box C: Richard Mecia T: 07375 383426 E: richardmecia@gmail.com (Nottingham)# 13" Greens Cadet, c/w box, Offers C: Philip Coates E: philc123@philc123.karoo.co.uk (Kingston upon Hull)#

14" Atco 5072B, 1920s, c/w Villiers engine, c/w box, £20.00 C: Louise Lowe T: 07901 676557 E: lowelouise@outlook.com (Mansfield)#

12" Suffolk Colt, c/w Type 75G14 s/n 819696 engine, c/w box, £25.00 C: Mark Brewin T: E: mark.a.brewin@btinternet.com (Wolverhampton)#

Ransomes Ajax, c/w box, c/w new rollers, FTGH C: Robert Marshall T: 01384 394392 (Stourbridge)# Webb, c/w box, £ C: George Scholes T: 07713 266796 E: george@translyft.com (Chipping Campden)#

36" Hayter, c1970s, c/w Kohler engine, c/w box, £FTGH C: Jeremy Singleton T: 07850

- 367917 E: jeremysingleton@gmail.com (Guildford)#
- 14" JP Electric Gryphon, 1960's, c/w box, Offers C: William Buist T: 01534 856077 E: buistdr@gmail.com (St Clement, Jersey)#
- 12" Greens SM Junior, 1930s, c/w box, £50 C: Henry Bechelet T: 07799 075918 E: Henry.bechelet@outlook.com (Ilkley)#
- Ransomes Ajax; Ransomes Atlas C: N Hackney T: 07932 896275 (Birmingham)#
- Greens Silens Messor, no 274026; JP Maxees Mk3 C: Sam Broadway T: 07979 760027 E: sambroadway1@hotmail.com (Bath)# Grass box for Follows & Bate Falcon C: Dean Brindley E: deanbrindley@me.com (Stoke on Trent)#
- 18" Webb motor mower, M9376, c/w B&S 2HP engine, c/w box, FTGH C: Mike Fortune T: 07884 220097 E: mike200361@yahoo.co.uk (Bournemouth)#
- 17" Lloyds, no 1483; 14" Qualcast Classic 35S; Scotts Speedy Green; 19" Landmaster Stoic 19 Rotary; Ransomes Trailer Seat; Wolseley Major Rotovator; Ryan Greensaire; 17" Lloyds Ariel; 14" Atco Standard; 14" Atco HY; 12" Qualcast L6B; 17" Ransomes motorised sidewheel c/w pneumatic tyres; 14" Ransomes Ripper; 17" Atco; 12" Qualcast Electric c/w spare motor; 14" Lloyds Pennsylvania Model L; 14" Atco 6012 c/w tools; 17" Lloyds no 1475, no engine; 24" Atco; 22" Atco; 14" Ransomes Ripper; 18" Allen Verticut; 24" Ryan Greensaire. Photos and further details available. Note - only one of the above has a grass box with it but there are at least 10 boxes plus some gang mowers and several spare engines and parts. C: Dave White T: 07885 592373 T: 01924 240961 E: isettaman@bru-ce.co.uk (Leeds)#
- Four Dennis mowers: 1935 24 inch mower, number 11580. Restoration nearing completion. See photos. £200. 1926 24 inch mower, rectangular petrol tank, number 5283. Blackburne engine. Unrestored. See photo. FTGH. 1929 30 inch mower, number 8067. Unrestored. FTGH. 1952 30 inch mower, number 167Z29, Incomplete - for spare parts. FTGH. Available singly or as a job lot. C: Martin Bingham. T: 01777 817026. E: bingham053@gmail.com (Lound, Nottinghamshire) #
- 20" Ransomes Jap engine c/w tow seat and roller; Webb 10" push mower; Suffolk 17" Super Punch; Greens 14" kick start mower; Ransomes 12" Ajax Mark 4 push mower; Vivian Loyd Rotary motor sickle c/w operating instructions; Atco 20" 093455B petrol mower; Suffolk Punch 14"; Suffolk Colt 12"; Atco 20"; Victa Rotary mower. C: Don Differy T: 01634 363174 / 07747 148221 E: beryl.diffey@talktalk.net (Sittingbourne)
- 12" Suffolk Motor Mower, model 24A. FTGH. C: Huw Lloyd. E: huwhp126@gmail.com. (Barry Island)
- 20" Ransomes marquis mk4a dr 8043; Ransomes auto cert mk 7a 001 50; Atco b14 electric start; Atco b17 electric start; Atco b17 spares; Webb 18" Briggs and Stratton; Qualcast 2 stroke aspero engine. All c/w grassboxes. C: Mike Shepherd. T: 07775480953. E: mikelshepherd44@gmail.com (Christchurch)

### WANTED

- Pre 1940 motor mowers and hand mowers. C: Michael Duck T: michael.duck345@gmail.com Grass box for 16" Atco Standard. C: Alan Perry T: 01684 310794 E: connieherry@hotmail.com (Upton on Severn)
- For Webb child's mower to complete restoration: complete front roller assembly with rollers, side cover plate, grass box C: Anthony Browne T: 01923 775159 E: anthonybrowne280@yahoo.co.uk (Hertfordshire)
- 20 inch 1950's Atco grass box. C: Peter Hancock T:07976223416 (Cheshire)
- Pair Dunlop garden tractor tyres, closed centre tread, 10x28 4 ply; Cutter deck for Flymo JLO engine model with 6 mounting holes; parts for Honda EC1500E generator - Fuel tank, tap, bowl, ignition coil, points and condenser. C: Robert Garnet. T: 07519118060 (Dungannon)
- Power drive, wheels, rear flap, ignition points, condenser, air filter, good cutter blade for Honda HR 21. C: Robert Garnet. T: 07519118060 (Dungannon)
- Very good McCulloch 10 10 Automatic in good working order, pre safety brake; parts for Coventry Victor WD1 and WD2 Hepolite pistons, either Std. or oversized. C: Robert Garnet. T: 07519118060 (Dungannon)

**Adverts can be submitted by filling in a form on the Club website, this is by far the easiest method as it helps to ensure that all the necessary information is provided. Adverts are also welcome by post or phone and are free of charge. Non members are denoted by a '#'**

## SOUVENIRS/CLOTHING

### Fleece £25

Most sizes available to order.

### Sweatshirt £18

XS/Small/Medium/Large/X/L and XX/Large

### Polo Shirt £16.50

XS/Small/Medium/Large/X/L and XX/Large

### Pilot Shirt £14

15"/16"/17&1/2/18"/19"

### Overalls £33

Reg Leg 31"

42"/44"/46"/48"/52"/54" Waist

### Baseball cap £8.50

Car sticker (Round) £1

Sew on badge £5

Pin badge £2

New Leather Key Fob £4.50

Exhibit log sheet £0.10

Glass tumbler £4 (2010 20th anniversary)

Grassbox binder £6

25th. Anniversary poster £2

Screwdriver multi tool £1

## BUFFALO ROLLERS

**New lawnmower rollers provided in a wide range of materials**

Rollers can be sent to many different countries, not just UK!

10% discount for club members

**C: Mike Floody. T: 07948 467995 E: mfloody@hotmail.co.uk**

## THE OLD LAWNMOWER COMPANY

**Specialists in post-war Lawnmowers & Scythes (Atco, Dennis, Ransomes, Suffolk, Webb, Allen)**

SPARE PARTS SALES RESTORATION OPERATION MANUALS

***New blade sharpening kit now available!***

**See website for details: [www.oldlawnmowers.co.uk](http://www.oldlawnmowers.co.uk)**

**T: 07930 314187 Ivor Gregory (Old Lawnmower Club Member)**

## DENNIS Z TYPE SPARES

Engine Parts - Piston Rings - Connecting Rods - Oil Pump Drive Gears

Cutting cylinders for 24" and 30" (not 36") and bottom blades

Transmission Parts, second hand cylinders and rear rollers

hq@testvalleytrout.co.uk T: 01794 512453

**Christopher Saunders-Davies (Old Lawnmower Club Member)**

## THE MOWER CENTRE

***For all sorts of spare parts***

Atco - Suffolk - Dennis - Villiers - JAP - Briggs & Stratton - Kohler

Gaskets - Piston Rings - Ignition Coils - Silencers - Cables - Petrol Taps - Oilers Points -

Condensers - Atco Kick Start Springs

*Call Us For Our Mail Order Price List* T: 01323 842477

**John Cruse (Old Lawnmower Club Member) [themowercentrehailsham.com](http://themowercentrehailsham.com)**

## J & I MASON Lawn mower repairs and restorations

Blade sharpening and happy to look at any vintage hand or petrol driven mower for repair

**James Mason, 3- 4 Fairview Cottages, Grove, Nr Wantage, Oxon, OX12 7JS**

Tel. 01235 767392

Published by the Old Lawnmower Club. Email: [olc@oldlawnmowerclub.co.uk](mailto:olc@oldlawnmowerclub.co.uk)

Printed by Fourly Print, Kings Hill, Kent.