

# ILLUSTRATED LIST OF PARTS

FOR

## RANSOMES JUNIOR GANG MOWER

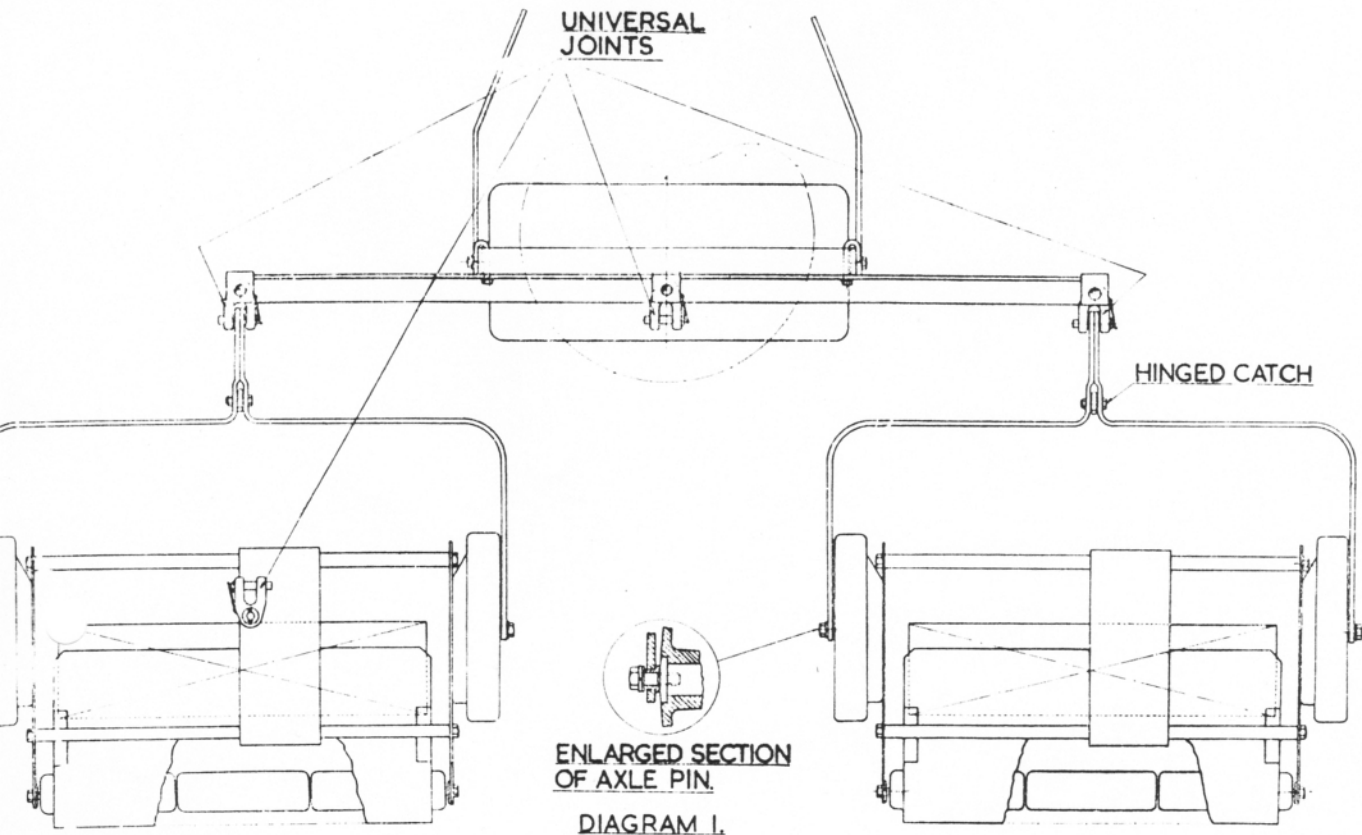
**NOTE.** Lockwashers where not quoted in this list are of the standard single coil type. Split pins are also not quoted, but are the standard mild steel type. Nuts. The mark of the nut applicable to any bolt or screwed pin, etc., will be found in brackets by the side of the mating part. All shafts, studs, etc., are supplied complete with nuts, keys, split pins, and washers where applicable.

### MAIN FRAME AND BOTTOM BLOCK

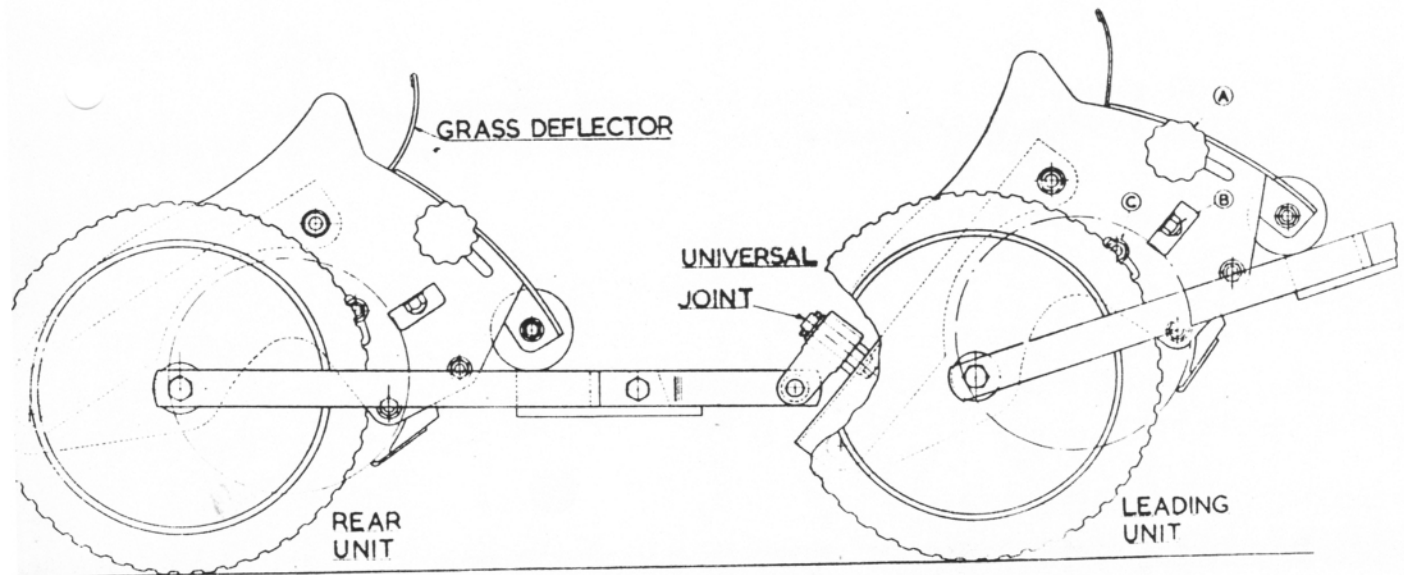
Mark	Description	Mark	Description
LS 2424/3	Washer. $\frac{3}{8}$ " dia.	LMA 449	Bottom Block and Blade
LS 2521/5	Screws for Bottom Blade	LMS 841	Deck Plate (LS 2421/10)
LCM 1	Side Frame L.H.	NAT 20 $\frac{1}{2}$ "	Bottom Blade
LCM 2	Side Frame R.H.	UFB 105/6R	Bolt for Bottom Block (LS 2421/9)
LCM 3	Bottom Block	UFB 105/8R	Bolt for grass deflector (LS 2421/9)

### CUTTING CYLINDER

Mark	Description	Mark	Description
O 10	Felt Washer. L.H.	LCM 73	Cylinder Housing. L.H.
O 77	Adjusting Spring	LCM 77	Cylinder Housing. R.H.
S 2424/2	Washer. $\frac{1}{6}$ " diameter	LCM 85	Cover for R.H. Housing
S 2514/3	Clamping Bolt (LS 2421/9)	LCM 88	Adjusting Bolt (LS 2421/9)
C 6101	Lubricator (Tecalemit)	LCM 187	5-knife Cylinder
CC 20 IN	Spiral Cutters	SKF 1203	Ball Bearings (Skefco)
CC 107	Felt Washer. R.H.		



GENERAL ARRGT. JUNIOR GANG UNIT.



TRANSPORT TOWING ARRGT. JUNIOR GANG UNIT.

DIAGRAM 2

### REAR ROLLS

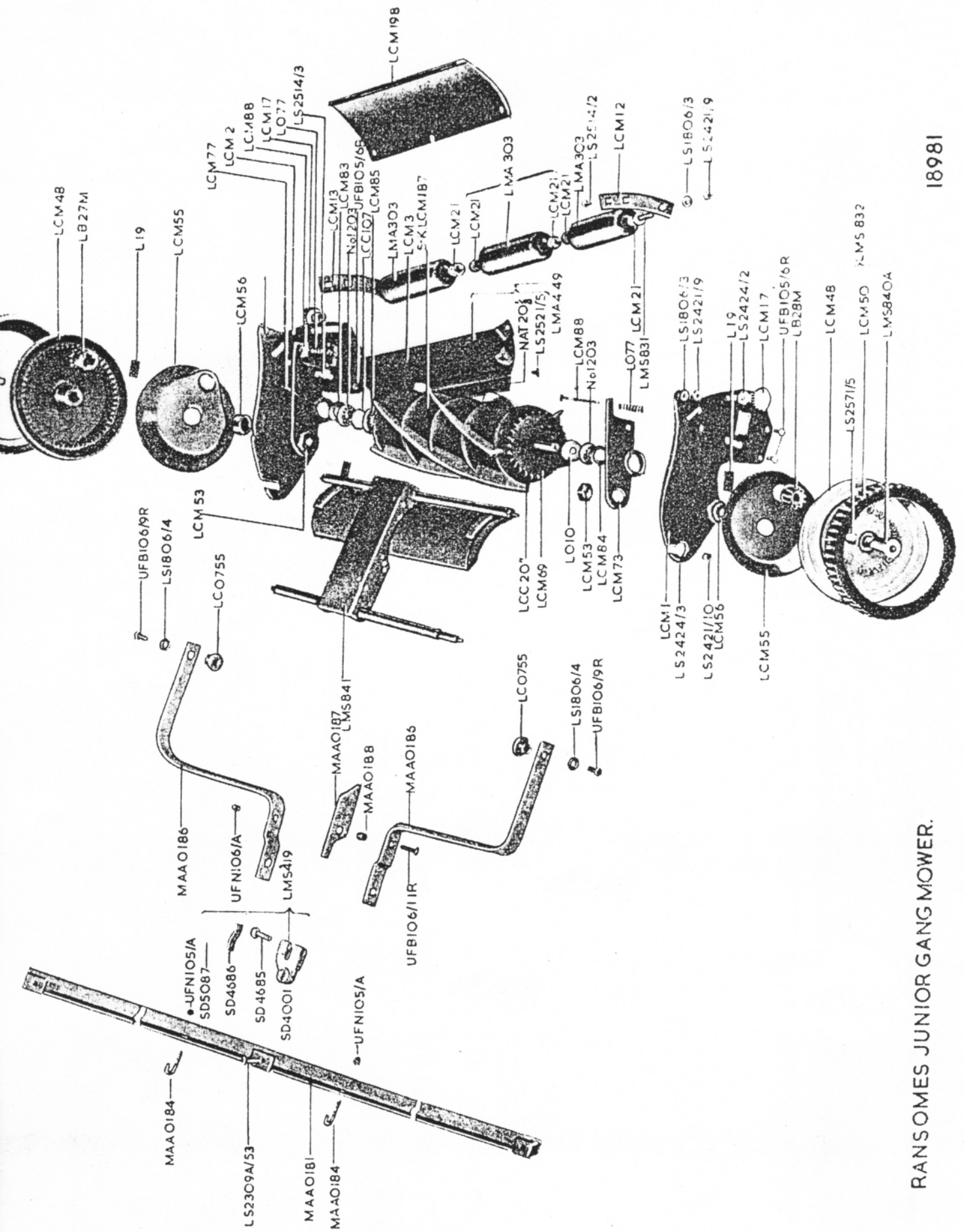
Mark	Description	Mark	Description
LS 1806/6	Washer. $\frac{1}{2}$ " diameter	LCM 17	Handwheel
LS 2424/2	Washer. $\frac{5}{8}$ " diameter	LCM 21	Rear Roll Bush
LS 2514/2	Carriage Bolt	LMA 303	Rear Roll and Bush
LCM 12	Carriage L.H.	LMS 831	Rear Roll Spindle
LCM 13	Carriage R.H.		

### SIDE WHEELS AND GEAR CASE

Mark	Description	Mark	Description
L 19	Pawl	LCM 53	Axle Pin Nut
LB 27 M	Pinion R.H.	LCM 55	Gear Case
LB 28 M	Pinion L.H.	LCM 56	Gear Case Centre
LS 2571/5	Lubricator	LMS 832	Side Wheel with Tyre
LCM 48	Side Wheel	LMS 840 A	Axle Pin and Nut
LCM 50	Tyre		

### DRAWBAR

Mark	Description	Mark	Description
LS 1806/4	Washer. $\frac{3}{8}$ " diameter	MAA 0181	Drawbar
LS 1806/5	Washer. $\frac{7}{8}$ " diameter	MAA 0184	Hook Bolt (UFN 105/A)
LS 2309A/53	Rivet. $\frac{7}{8}$ " diameter x $2\frac{1}{8}$ " long	MAA 0186	Bow Iron
LS 2424/1	Washer. $\frac{1}{4}$ " diameter	MAA 0187	Hinged Catch
SD 4001	Swivel Joint	MAA 0188	Distance Piece
SD 4685	Connecting Pin	MAA 0189	Stud for Trailing Swivel
SD 4686	Spring		(LS 2318/27)
SD 5087	Screw	UFB 106/9R	Bolt for Bow Iron (UFN 106/A)
LC 0755	Bearing	UFB 106/11R	Bolt for Bow Iron (UFN 106/A)
LMS 419	Swivel Joint. Complete		



RANSOMES JUNIOR GANG MOWER.