
SUFFOLK

SUPER COLT

motor mower

FOUR STROKE ENGINE

**OPERATING & MAINTENANCE
MANUAL**

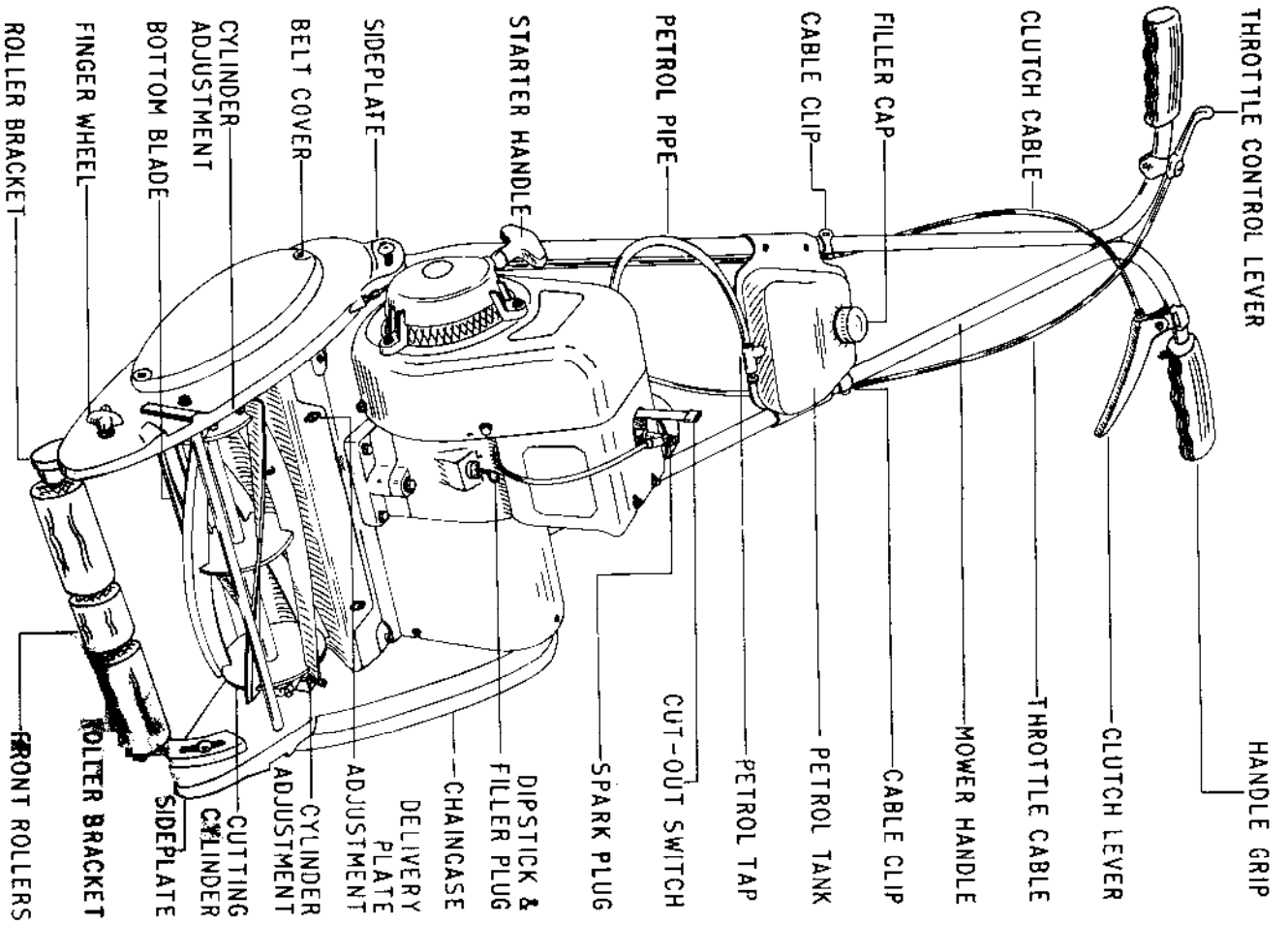


Fig. 1

1

RS.4895/2/68

Read this before using the Mower

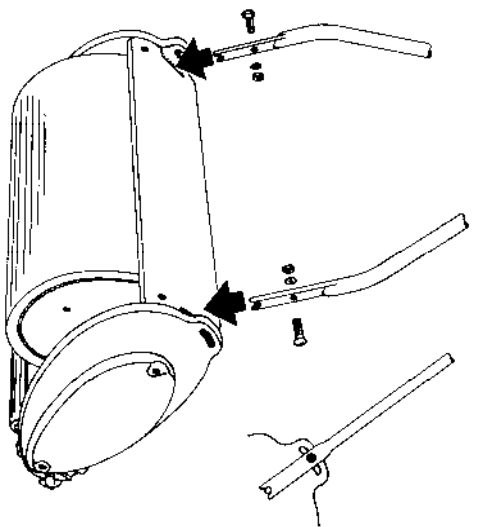


Fig. 2

PREPARING THE MOWER FOR USE

HANDLE Fit the forked end of the handle into the two slots at the rear of the engine platform, so that they fit on to the small projections on the inside of the sideplates. Then pass the bolts through the slots in the sideplates and through the holes in the handle. The nuts should always be on the inside.

Before tightening, set the handle at the required height.

CONTROL LEVERS These should be fitted to the handle by the straps and screws, in convenient positions, close to the handle grips. The throttle control lever is normally fitted at the right hand side, and the clutch lever at the left. The cables should be arranged in smooth curves, and fixed by the cable clips, as illustrated in Fig. 1.

PETROL TANK This should be fitted over the handle, and pressed down so that it wedges firmly in position, with the filler cap at the top. The petrol pipe should be pushed firmly over the inlet pipe on the carburetter, so that petrol can flow from the tank to the carburetter, when petrol tap is turned on.

See Fig. 1.

ENGINE OIL. Before starting the engine, remove the filler plug at the front of the engine, and put half a pint of oil in the crank-case. The engine nameplate recommends the correct grade of oil.

Do not over-fill.

Replace the filler plug firmly, together with the dipstick. Afterwards the oil level should be checked on the dipstick every time before use, and more oil added when necessary, to bring the level up to the mark on the dipstick. Dipstick readings should always be taken with the mower on level ground.

(See notes A, B, C, D, regarding oil changes, etc.)

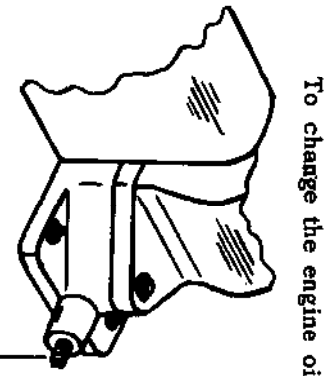


Fig. 3

PETROL. (DO NOT MIX OIL WITH PETROL)

Fill the petrol tank with **CLEAN** petrol, preferably of a cheaper grade (Three Star). The tank holds approximately two pints, which is enough for about 2 hours' work.

Always replace the cap on the petrol tank.

WARNING. It is dangerous to fill the petrol tank while the engine is running.

HEIGHT OF CUT. To regulate the height of cut, loosen the finger wheels holding the roller brackets, and with the mower on a flat surface, set the brackets to the desired height, then tighten the finger wheels with spanner supplied.

It is important that the brackets be adjusted equally.

STARTING THE ENGINE

WARNING - Never race the engine when new.

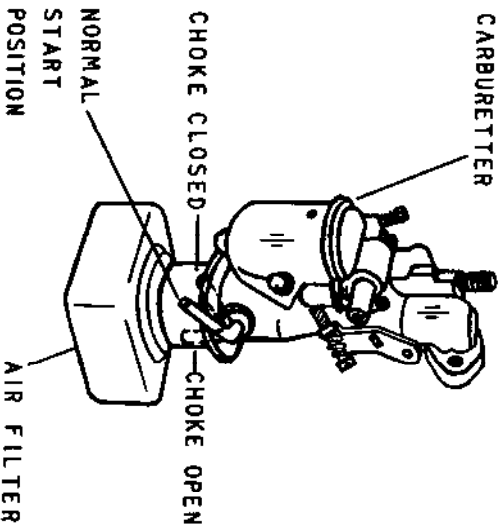


Fig. 4

Under hot conditions it may be easier to start with the choke wide open, that is, with the lever vertical.)

Lever down - choke open. Lever sideways - choke closed.

Press the tickler on the top of the carburettor until petrol just begins to overflow through the small hole.

Holding the mower steady, grasp the starter handle firmly, and pull smartly, until about two feet of rope is showing. Maintain your grip on the handle, but let the rope recoil gently. Do not release your grip on the starter handle until the rope has recoiled. To allow the rope to fly back could damage the spring.

After one or two pulls the engine should start, and as it warms up the choke should be opened, and the throttle control lever closed, until the engine is ticking over quietly.

Turn the petrol on by pulling the tap button out gently, and open the throttle control lever about a third of its movement.

Partly close the choke lever to position about 45 degrees to the vertical.

(Under cold conditions, the choke should be completely closed by turning the lever to a horizontal position, but this is not often necessary.)

STOPPING THE ENGINE

To stop the engine, press the cut-out switch on to the spark plug, and hold it there until the engine stops. If the engine is to be stopped for any length of time, turn the petrol off.

FITTING THE GRASSBOX

Locate the brackets on the box in the slots in the side-plates.

USING THE MOWER.

When the throttle is opened, the engine will speed up and drive the cutting cylinder, but the mower will not move under power until the rear roller clutch is engaged.

With the clutch disengaged, it is easy to mow awkward corners, pushing the mower by hand.

For fully propelled operating, pull back the clutch lever, and the mower will move forward under its own power.

The speed of the mower can be adjusted to a convenient walking pace by opening or closing the throttle control lever.

When turning at the end of each strip, simply release the clutch lever, and turn the mower as required.

STOPPING To stop the mower moving, release the clutch lever.

To stop the cutting cylinder rotating, close the throttle.

ROUTINE ADJUSTMENTS AND MAINTENANCE

NEVER MAKE ADJUSTMENTS WITH THE ENGINE RUNNING.

CUTTING CYLINDER When correctly adjusted, the cylinder blades should lightly and evenly touch the bottom blade. Adjusting screws are provided at each end to raise or lower the cylinder. Turning the screws clockwise will bring the cylinder blades close to the bottom blade.

WARNING Take care when rotating the cutting cylinder by hand, as the blades are very sharp.

DELIVERY PLATE If grass cuttings are not being thrown properly into the grassbox, the angle of the delivery plate may be altered by loosening the two screws, sliding the delivery plate forward or backward a little as necessary, then tightening the screws again. See Fig. 1.

CLUTCH ADJUSTMENT

If the clutch slips, the belt should be adjusted (after stopping the engine) by releasing the locknut and rotating the ferrule anticlockwise.

The rear roller should be disengaged with the clutch lever released, and engaged with the lever held comfortably close to the handle. Tighten the locknut after adjusting the ferrule.

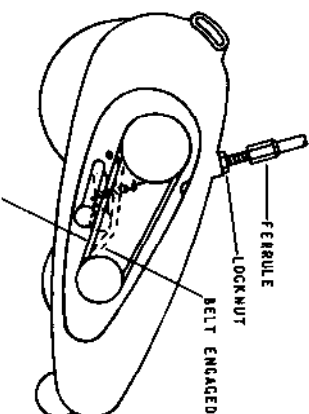


Fig. 5 BELT DISENGAGED BELT ENGAGED

OIL The following points should be oiled with light machine oil each time before use:- The cutting cylinder bearings, through the spring cap lubricators; the rear roller, through the small hole at the right hand side; and the front rollers at each end and between the rollers. The left hand end of the rear roller should be oiled with the machine tilted forward on the front roller. See Fig. 7.

WARNING Do not oil the centrifugal clutch, or the vee belt drive.

GREASE After every 15 hours' use (Say once a quarter) remove the chaincase and grease the chain.

AIR FILTER

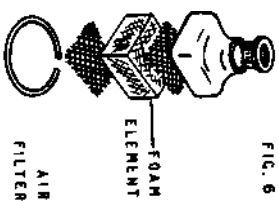


Fig. 6

After every 30 hours' use, or more often if conditions are extra dusty, pull off the air filter and take out the foam element.

Wash the element in petrol, squeeze out, and allow to dry, then replace carefully.

Replace the element after 100 hours' use.

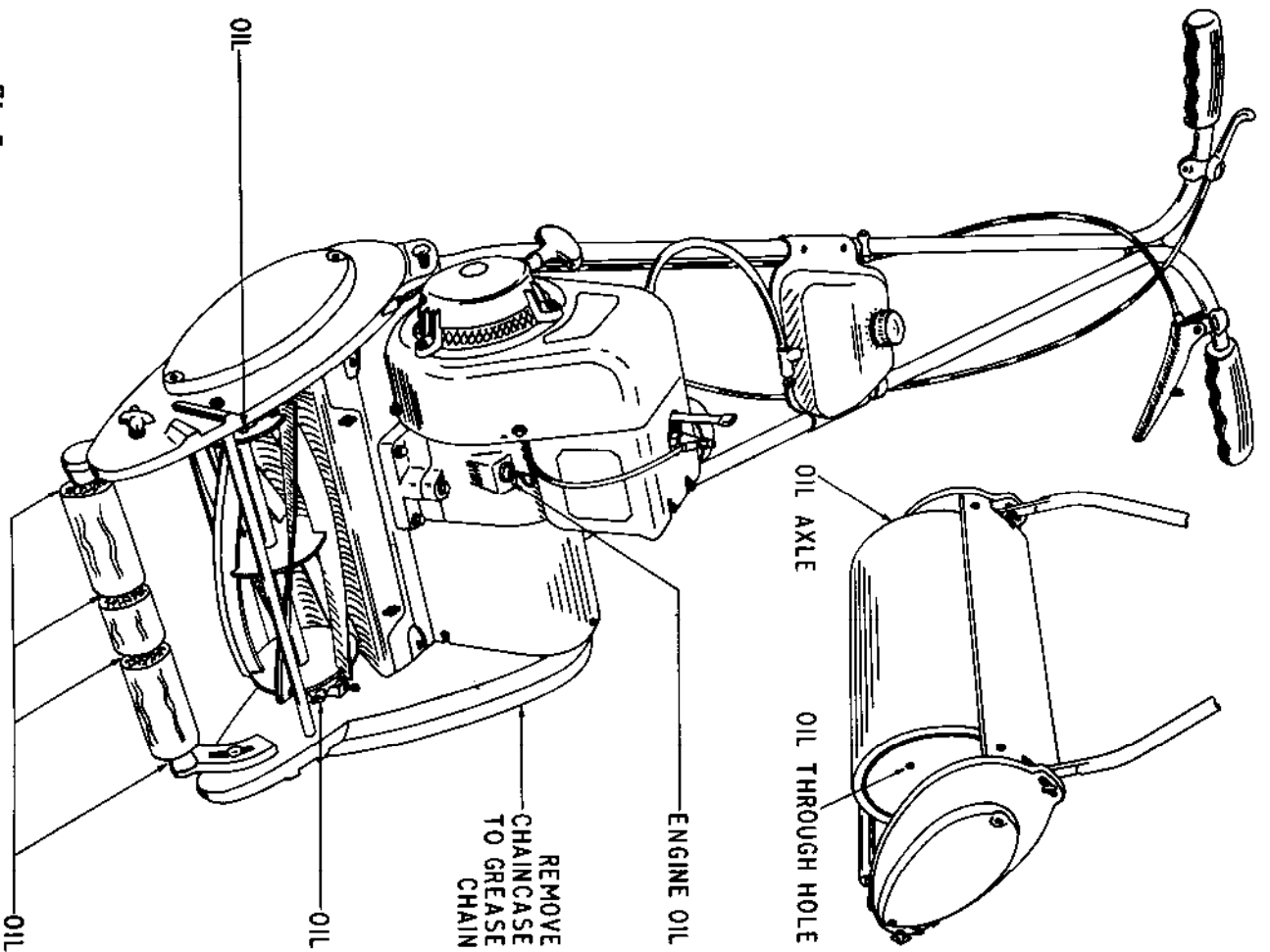


Fig. 7

BOLTS Check bolts and nuts for tightness, after the first 5 hours' use, and re-check after every 30 hours' use.

FOR BEST RESULTS FOLLOW THIS SIMPLE ROUTINE

- A. Before use, each time { Oil mower, check petrol and engine oil levels.
- B. After first 5 hours { Change engine oil, and check bolts and nuts.
- C. After every 15 hours { Remove chaincase, and grease chain.
- D. After every 30 hours { Change engine oil, check bolts (say once a year and nuts, grease chain and preferably before clean air filter. winter storage)

STORAGE The mower should be kept in a dry, ventilated place.

FOR WINTER STORAGE Grease the cutting surfaces, fill the tank with petrol, ensuring that the tap is closed, and change the engine oil as previously described. Remove the spark plug, insert a teaspoon of engine oil in the hole, and turn the engine over a few times by means of the recoil starter, then replace spark plug.

GENERAL If the mower is damaged or faulty when received, inform your supplier at once.

FOR SERVICE Write to:-

Suffolk Iron Foundry (1920) Ltd.,
Sunnyhill Avenue,
Derby.

(Telephone Derby 21201, ten lines)

FOR SPARES APPLY TO YOUR LOCAL STOCKIST,

or in case of difficulty write to:-

Suffolk Iron Foundry (1920) Ltd.,
Stowmarket,
Suffolk.

(Telephone Stowmarket 2183, five lines)

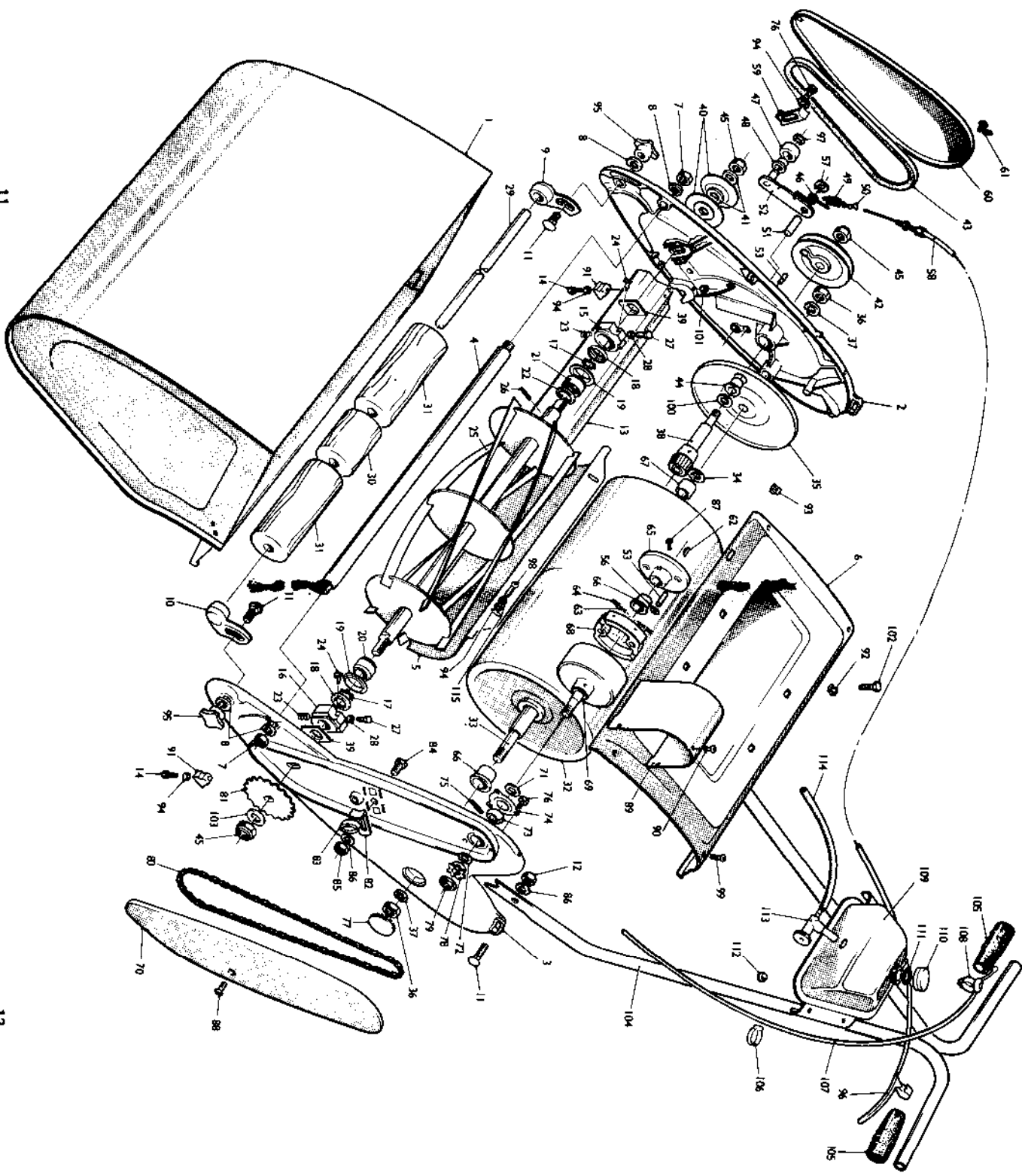
SUFFOLK SUPER COLT MOTOR MOWER SPARE PARTS LIST

Ref. No.	Description	Part No.	No. per set
1	Grassbox ...	L. 8508	1
2	Slideplate R.H. ...	L. 8443	1
3	Slideplate L.H. ...	L. 8444	1
4	The Rod ...	L. 8446	1
5	Delivery Plate ...	L. 8447	1
6	Engine Platform ...	L. 8449	1
7	Nuts for The Rod ...	IN32A	2
8	Spring Washer for The Rod & Roller Brackets	IN624	4
9	Roller Bracket R.H. ...	L. 5198	1
10	Roller Bracket L.H. ...	L. 5199	1
11	Bolt for Roller Bracket and Handle ...	L. 8673	4
12	Nut for Handle ...	IN45A	2
13	Bottom Blade Unit ...	L. 8581	1
14	Bolt for Bottom Blade Unit ...	IA124S	2
15	Bearing Block, R.H. ...	L. 8536	1
16	Bearing Block, L.H. ...	L. 8537	1
17	Ball Retainer ...	L. 2968	1
18	Cup for Ball Retainer ...	L. 2969	2
19	Dust Seal ...	L. 6501	2
20	Cone, Long, L.H. complete with 19	L. 7153	1
21	Cone, Short, R.H. complete with 19	L. 7154	1
22	Spring Washer for Cutting Cylinder ...	L. 2970	1
23	Spring for Bearing Block ...	L. 3494	2
24	Labractors ...	L. 6751	2
25	Cutting Cylinder, with Cones & Dust Seals	L. 8409	1
26	Millie Pin for Cutting Cylinder ...	L. 6776	1
27	Adjusting Screw for Bearing Block	L. 7222	2
28	Nut for Bearing Block Adjusting Screw	L. 6954	2
29	Front Roller Spindle ...	L. 8448	1
30	Wood Roller - Short ...	L. 3435	1
31	Wood Roller - Long ...	L. 3436	2
32	Rear Roller, complete with bushes ...	L. 8773	1
33	Rear Roller Spindle ...	L. 8450	1
34	Thrust Washer for Rear Roller ...	L. 8451	1
35	Cover Plate for Rear Roller ...	L. 8775	1
36	Nut for Rear Roller Spindle	IN85A	2
37	Spring Washer for Rear Roller Spindle	IN625	2
38	Pinion & Shaft Sub Assembly ...	L. 8646	1
39	Felt Pad for Cylinder Spindle ...	L. 8472	2
40	Cylinder Pulley Half ...	L. 8473	2
41	Cylinder Pulley Spacer ...	L. 8474	2
42	Rear Roller Pulley ...	L. 8475	1
43	Vee Belt ...	L. 8476	1
44	Bush for Pinion Shaft ...	L. 8477	2
45	Nut for Cylinder Spindle & Pinion Shaft	L. 6957	3
46	Torsion Spring ...	L. 8483	1
47	Jockey Pulley ...	L. 8485	1
48	Bearing for Jockey Pulley ...	L. 8486	1
49	Tension Spring ...	L. 8487	1
50	Shackle ...	L. 8488	1

Ref. No.	Description	Part No.	No. per set
51	Millie Pin for Lever Arm ...	L. 8414	1
52	Lever Arm end Spindle ...	L. 8545	1
53	Millie Pin for Clutch & Belt ...	L. 8415	3
56	Removable Ratchet Plate for Clutch	L. 8416	2
57	Removable Ratchet Plate for Lever Arm	L. 8417	1
58	Cable for Jockey Pulley ...	L. 8489	1
59	Belt Guide ...	L. 8490	1
60	Belt Cover ...	L. 8491	1
61	Screw for Belt Cover ...	L. 8588	2
62	Woodruff Key for Clutch Backplate ...	L. 3845	1
63	Clutch Spring ...	L. 4473	2
64	Adjusting Screw for Clutch ...	L. 4474	2
65	Clutch Backplate ...	L. 6097	1
66	Flanged Bush for Rear Roller & Clutch Backplate	L. 6162	2
67	Plain Bush for Rear Roller ...	L. 7034	1
68	Clutch Shoe ...	L. 4704	2
69	Clutch Spindle & Drum ...	L. 8496	1
70	Chain Case ...	L. 8492	1
71	Thrust Collar for Clutch Spindle ...	L. 8499	1
72	Thrust Collar for Sprocket ...	L. 8500	1
73	Spherical Bush ...	L. 8501	1
74	Bearing Retainer ...	L. 8502	1
75	Felt Packing Strip ...	L. 8503	1
76	Screw for Bearing Retainer & Belt Guide	3D270A	4
77	Plug Button ...	L. 7233	1
78	7 Tooth Sprocket ...	L. 7859	1
79	Nut for Clutch Spindle ...	L. 8388	1
80	Sprocket Chain ...	L. 5148	1
81	19 Tooth Sprocket ...	L. 8538	1
82	Chain Adjuster ...	L. 7062	1
83	Nylon Stripper for Chain Adjuster ...	ID049S	1
84	Screw for Chain Adjuster ...	L. 8406	3
85	Nut for Chain Adjuster ...	IN561A	1
86	Washer for Chain Adjuster & Handle	L. 3846	1
87	Setscrew for Clutch Backplate ...	L. 8583	1
88	Screw for Chain Case ...	L. 8587	1
89	Clutch Cover ...	L. 8516	3
90	Screw for Clutch Cover ...	L. 8587	1
91	Soleplate Block ...	L. 5547	2
92	Nut Grip for Engine Mounting	L. 6960	4
93	Nut Grip for Delivery Plate ...	L. 6961	2
94	Washer for Bottom Blade, Delivery Plate & Belt Guide	L. 7132/P	5
95	Plunger Wheel ...	L. 7926	2
96	Clutch Lever ...	L. 8517	1
97	Clutchlip for Jockey Pulley ...	L. 8585	1
98	Screw for Delivery Plate ...	L. 8591	2
99	Screw for Dagna Platform ...	L. 8592	6
100	Spacing Washer ...	L. 8647	1
101	Nut for Bottom Blade Unit ...	IN31A	2
102	Screw for Engine Mounting ...	3D086A	4

Continued on Page 13

Mower Assembly Illustration



ENGINE SPARE PARTS LIST.
MODEL 75 G 14. - 24A

Ref. No.	Description	Part No.	No. per set
103	Washer for 19 Tooth Sprocket	IN5644A	1
104	Tubular Handle, with Grips	L. 8550	1
105	Handle Grip	L. 8665	2
106	Cable Clip	E. 5315	2
107	Throttle Cable	E. 7165	1
108	Throttle Control Lever	E. 7005	1
109	Petrol Tank	L. 8264	1
110	Screw Cap	E. 3589	1
111	Washer for Cap	E. 3591	1
112	Grommet for Tank	L. 8515	4
113	Petrol Tap	E. 8382	1
114	Petrol Tube	L. 8548	1
115	Spring Washer for Delivery Plate	3N623	2

The above list to be read in conjunction with
MOWER ASSEMBLY ILLUSTRATION
on pages 11 and 12

INSTRUCTIONS FOR ORDERING SPARE PARTS

It is essential to quote the following:

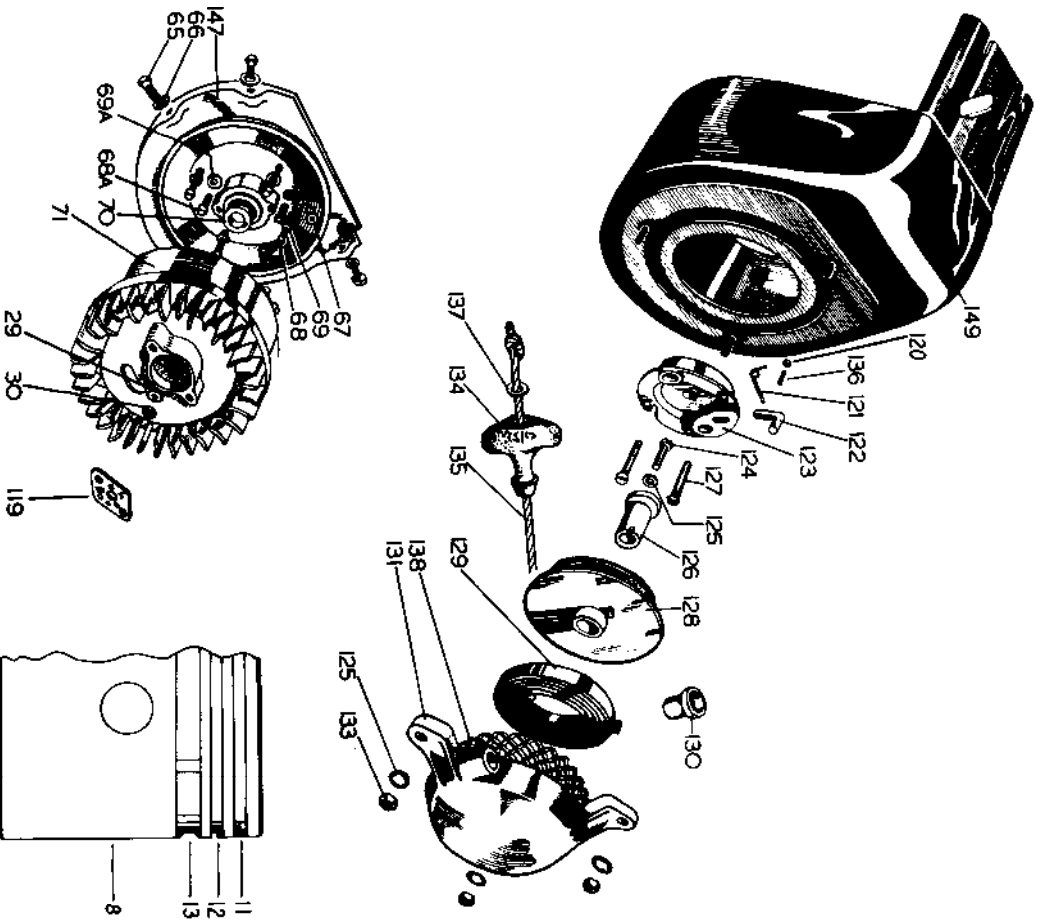
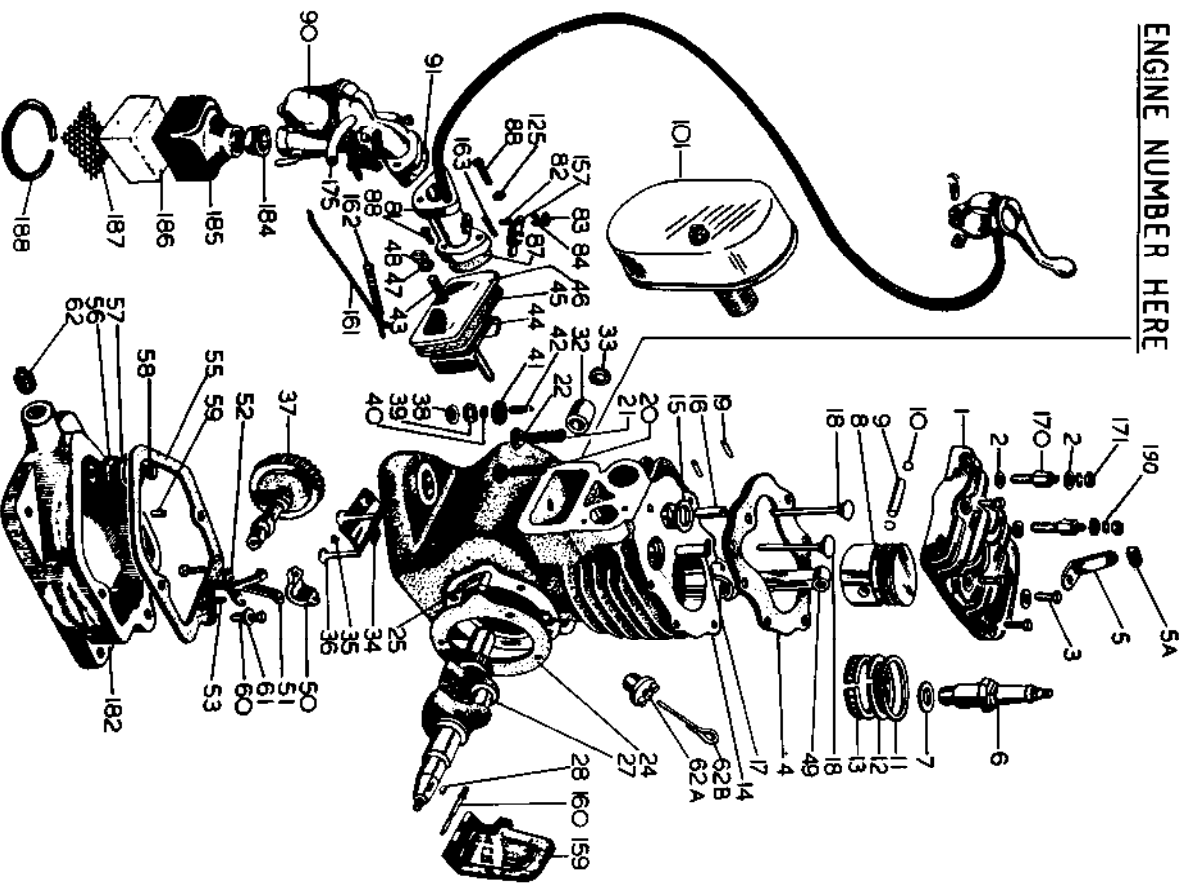
- (a) The Model Name of the machine.
- (b) The engine serial number (See Engine Assembly illustration).
- (c) The PART NO. of the part NOT the Illustration Ref.No.

Ref. No.	Description	Part No.	No. per set
1	Cylinder Head	E. 7257	1
2	Washer for Cylinder Head	3N561A	8
3	Set-Screws for Cylinder Head	5D336S	4
4	Cylinder Head Gasket	E. 7280	1
5	Cut-out switch	E. 9699	1
5a	Rubber Tube for Cut-out Switch	E. 4083	1
6	Spark Plug	E. 8400	1
7	Washer for Spark Plug		
8	Platon		
9	Gudgeon Pin	E. 3513	1
10	Wise Circclips	E. 3517	1
11	Compression Ring	E. 3518	2
12	Scrapper Ring	E. 3514	1
13	Oil Plug	E. 3515	1
14	Cylinder Block	E. 3516	1
15	Valve Seat Insert - Exhaust	E. 8103	1
16	Exhaust Valve Guide	E. 3532	1
17	Inlet Valve Guide	E. 3533	1
18	Inlet Valve and Exhaust Valve	E. 3526	2
19	Valve Spring Cotter Pin	E. 3531	2
20	Inlet Valve Spring	E. 3529	1
21	Exhaust Valve Spring	E. 3528	1
22	Valve Spring Retainer	E. 3968	2
24	Paper Gasket for Flywheel Magneto Backplate	E. 3689	3
25	Camshaft Spindle	E. 6789	1
27	Crankshaft	E. 8142	1
28	Key for Magneto Flywheel	E. 3597	1
29	Washer for Crankshaft	E. 8390	1
30	Nut for Crankshaft (Left Hand Thread)	E. 8043	1
32	Main Bearing	E. 3536	2
33	Oil Seal	E. 3813	2
34	Breather Baffle	E. 3561	1
35	Drive Screw for Breather Baffle	E. 3814	1
36	Tappets	E. 3535	2
37	Camshaft	E. 3510	1
38	Washer for Crankcase Breather	E. 3594	1
39	Breather Body	E. 3555	1
40	Disc Valve	E. 3557	1
41	Breather Cap	E. 3556	1
42	Breather Retainer Spring	E. 3558	1
43	Stud for Valve Chest Cover	E. 7098	1
44	Baffle for Valve Chest Cover	E. 3560	1
45	Gasket for Valve Chest Cover	E. 3549	1
46	Cover for Valve Chest	E. 3543	1
47	Washer for Stud	E. 7132	1
48	Nut for Stud	1N44A	1
49	Connecting Rod		
50	Big End Bearing Cap		
51	Oil Splasher	E. 6406	1
52	Locking Strip	E. 3523	1
53	Screws for Big End Bearing Cap	1D585S	2
55	Paper Gasket for Sump	E. 3547	1
56	Washer for Bolt - Asbestos	E. 3749	1

Continued on Page 17

Engine Assembly Illustration

ENGINE NUMBER HERE



Ref. No.	Description	Part No.	No. per set
57	Collar for Bolt	E.3566	1
58	Bolt for Sump	1A199A	1
59	Dowels for Sump	E.3819	2
60	Setscrew for Sump	1D087A	1
61	Shakeproof Washer for Setscrew	E.3821	1
62	Drain Plug	E.3822	1
62A	Filler Plug (Export Only)	E.7506	1
62A	Filler Plug (Home Trade Only)	E.6894	1
62B	Dip Stick for Filler Plug	E.6895	1
65	Screw for Cowl	3D270A	4
66	Washer for Cowl	E.7132/P	4
67	Sleeve for H.T. Lead	E.8454	1
68	Screw for Flywheel Magneto Backplate	3D048A	4
68A	Screw for Magneto Stator Plate	3D048A	2
69	Washer for Flywheel Magneto Backplate	E.3844/P	4
69A	Washer for Screw for Magneto Stator Plate	E.7132/P	2
70	Cam Sleeve	E.8146	1
71	Flywheel	E.8161	1
81	Inlet Manifold	E.7437	1
82	Stud for Throttle Lever	E.8017	1
83	Nut for Throttle Lever	E.8015	1
84	Washer for Throttle Lever	3N610A	1
87	Gasket for Inlet Manifold	E.8589	1
88	Screw for Carburettor & Inlet Manifold	E.7772	4
90	Carburettor	E.7179	1
91	Gasket for Carburettor	E.8640	1
101	Exhaust Silencer	E.8685	1
119	Spacer for Recoil Starter	E.8378	1
120	Nylon Distance Piece	E.8093	1
121	Spring for Driving Pin	E.8092	1
122	Driving Pin	E.7339	1
123	Pawl Hub	E.8094	1
123a	Pawl Hub Sub. Assy. Comprising with Ref. Nos. 120, 121, 122, 123 and 136	E.7407	1
124	Centre Screw	1K298A	1
125	Shakeproof Washer for Centre Screw, Cover, Inlet Manifold & Carburettor Assembly	E.6865/P	8
126	Bush	E.5524	1
127	Screws for Pawl Hub	1H335A	2
128	Ratchet Pulley	E.7338	1
129	Recoil Spring	E.5516	1
130	Rope Guide Bush	E.5522	1
131	Cover for Recoil Starter	E.5534	1
133	Nuts for Cover	3N31A	3
134	Rubber Handle	E.5518	1
135	Nylon Rope	E.5517	1
136	Pin for Retaining Spring	E.8091	1
137	Washer for Rope Handle	E.7132/P	1
138	Screen	E.6590	1
139a	Recoil Starter Assembly Comprising Ref. Nos. 120, 121, 122, 123 and 136	E.8172	1
147	Magneto Backplate	E.8144	1
149	Cowl	E.8241	1
157	Throttle Lever	E.7161	1
159	Governor Blade	E.8202	1
160	Governor Blade Spindle	E.8336	1
161	Throttle Link	E.8204	1
162	Governor Spring	E.8203	1

Ref. No.	Description	Part No.	No. Per set
163	Throttle Return Spring	E.6531	1
170	Studs for Cylinder Head	E.8170	2
171	Nuts for Cylinder Head Studs	3N45A	2
182	Sump	E.6889	1
184	Rubber Bush for Air Filter	E.7174	1
185	Air Filter Body	E.7173	1
186	Air Filter Element (Foam)	E.8593	1
187	Air Filter Screen	E.7175	1
188	Wire Clip for Air Filter	E.3579	1
189	Air Filter Assembly, comprising Ref. No's. 184 to 188, inc.	E.7176	1
190	Spring Washer for Cylinder Head Stud	3N624	2

The above list to be read in conjunction with ENGINE ASSEMBLY ILLUSTRATION, on pages 15 and 16

INSTRUCTIONS FOR ORDERING SPARE PARTS

It is essential to quote the following:

- (a) The Model Name of the machine.
- (b) The engine serial number (See Engine Assembly Illustration).
- (c) The PART NO. of the part NOT the Illustration Ref.No.

Carburettor Illustration

SPARE PARTS LIST FOR ZENITH CARBURETTOR

TYPE 13, TCA - 2.

Ref. No.	Description	Part No.
1	Air Regulating Screw	015457
2	Spring for Ref. 1	015458
3	Screw and Spring Washer fixing Bowl to Barrel (Short)	020584
3a	Screw and Spring Washer fixing Bowl to Barrel (Long)	019651
4	Throttle Stop Screw	015547
5	Spring for Ref. No. 4	08539
6	Carburettor Barrel Assembly	020573
7	Washer for Needle Seating	08523
8	Needle Seating	020574
9	Gasket (Bowl to Barrel)	020583
10	Float and Needle Assembly	020507
11	Adjustment Needle	020576
12	Spring for Ref. No. 11	09846
13	Fibre Washer for Ref. No. 11	16709
14	Strangler Spindle and Pin Assembly	020579
15	Strangler Flap	013635
16	Split Pin for Ref. No. 15	05370
17	Split Pin for Spindle	08860
18	Washer for Spindle	013650
19	Friction Spring	020575
20	Carburettor Bowl	020582
21	Slow Running Tube	05890
22	Split Pin for Ticker Stem	015454
23	Ticker Spring	020572
24	Ticker Stem	

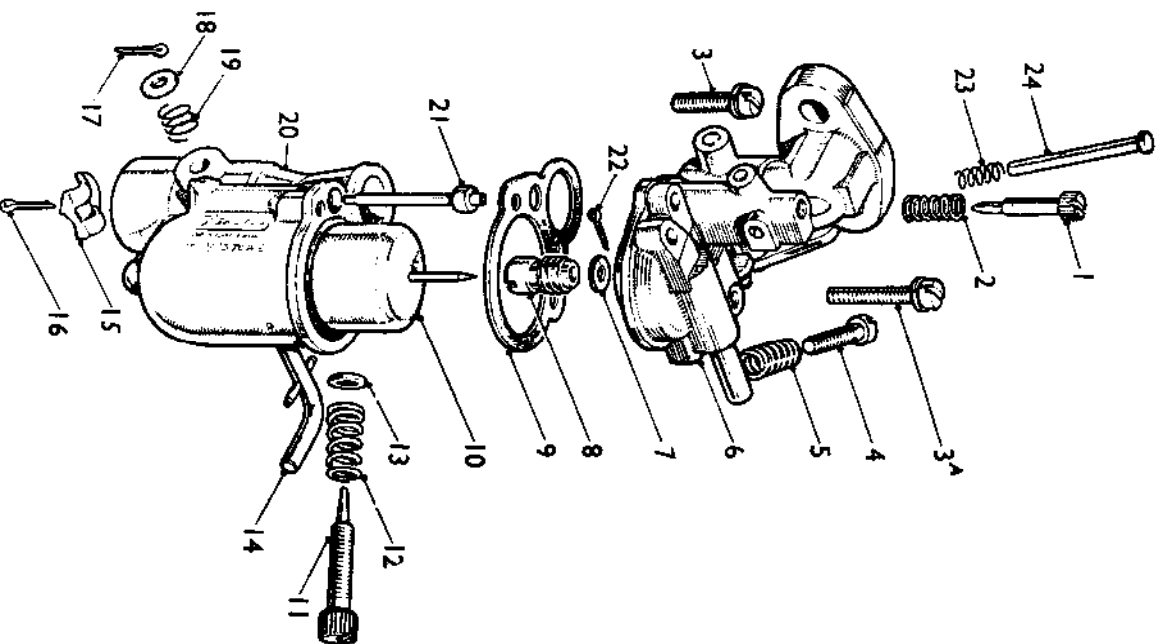
This list to be read in conjunction with

EXPLODED ILLUSTRATION OF CARBURETTOR on Page 20

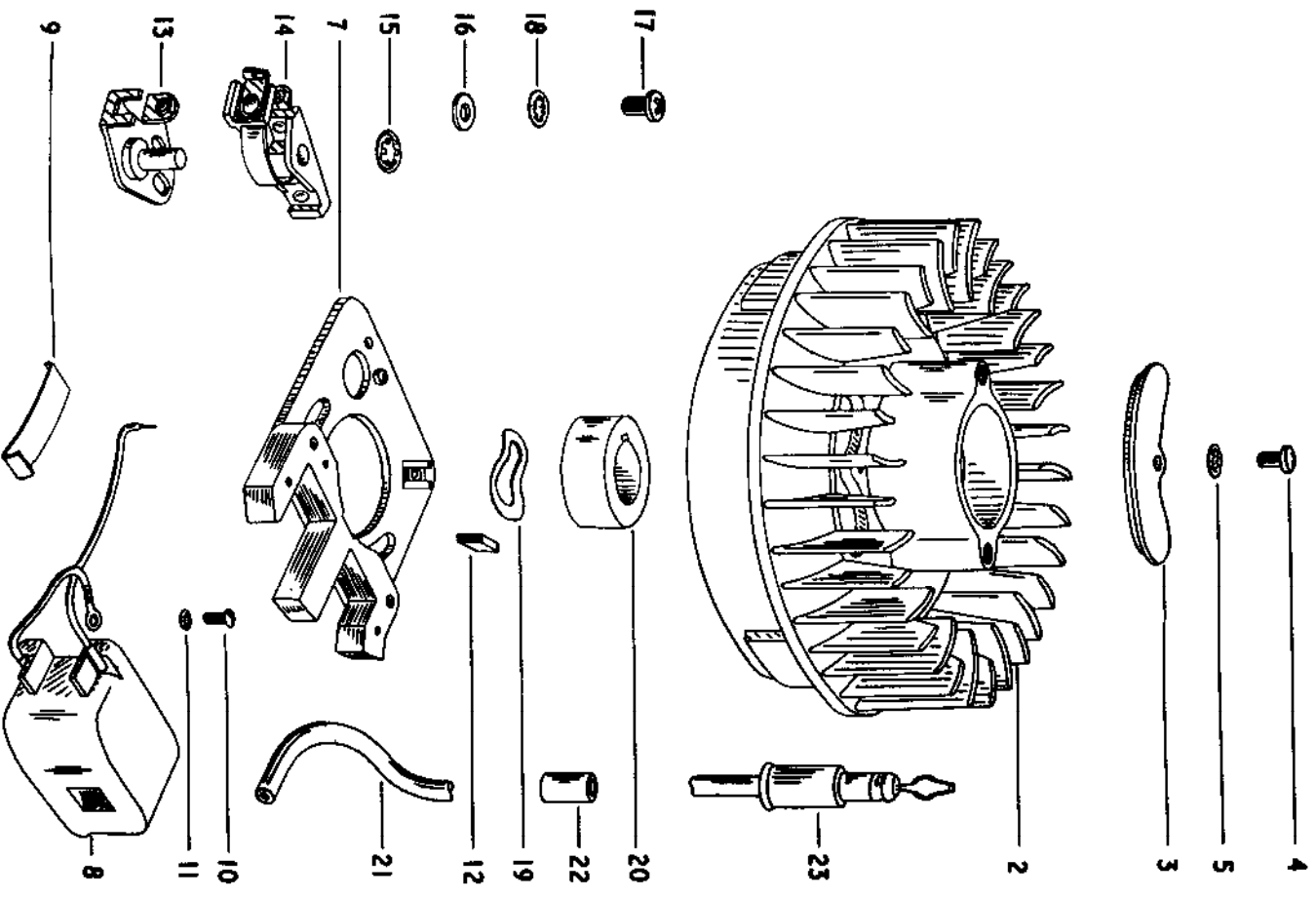
INSTRUCTIONS FOR ORDERING SPARE PARTS

It is essential to quote the following:

- (a) The Model Name of the machine.
- (b) The engine serial number (See Engine Assembly Illustration).
- (c) The PART NO. of the part NOT the Illustration Ref.No.



Magneto Assembly Illustration



MAGNETO SPARE PARTS LIST.

Ref. No.	Description	Part No.	Per set	No.
1	Flywheel Assy., Items 2-5 Inc.	E. 8168	1	1
2	Inspection Cover	E. 8161	1	1
3	Screw for Inspection Cover	E. 8113	1	1
4	Star Washer for Inspection Cover	E. 8131	1	1
5	Star Washer for Inspection Cover	E. 5042	1	1
6	Stator Unit S/A, Items 7-18 Inc.	E. 8108	1	1
7	Stator Plate Assembly	E. 8115	1	1
8	Coil & Condenser Assembly	E. 8123	1	1
9	Retaining Clip for Coil	E. 8126	1	1
10	Lead Clamp Screw	E. 8149	1	1
11	Star Washer for Clamp Screw	E. 8160	1	1
12	Cam Wiper Felt	E. 5047	1	1
13	Adjuster Plate Assembly	E. 8148	1	1
14	Breaker Arm Assembly	E. 8154	1	1
15	Retaining Clip for Breaker Arm	E. 8137	1	1
16	Washer for Adjuster Plate Screw	6N611A	1	1
17	Screw for Adjuster Plate	E. 8131	1	1
18	Star Washer for Adjuster Plate	E. 5042	1	1
19	Wave Washer	E. 5052	1	1
20	Cam Sleeve	E. 8146	1	1
21	H.T. Lead	E. 8124	1	1
22	Sleeve for H. T. Lead	E. 8454	1	1
23	Suppressor	E. 7858	1	1

The above list to be read in conjunction with
MAGNETO ASSEMBLY ILLUSTRATION on Page 22

INSTRUCTIONS FOR ORDERING SPARE PARTS

It is essential to quote the following:

- (a) The Model Name of the machine.
- (b) The engine serial number (See Engine Assembly Illustration).
- (c) The PART NO. of the part NOT the Illustration Ref.No.