

**Spare and  
Replacement Parts List**

*of*

**VILLIERS**

**TWO-STROKE**

**ENGINES**

**MARK V1 A, V1 B, AND V1 C**

*including*

**FLYWHEEL MAGNETOS AND  
ELECTRIC LIGHTING EQUIPMENT**

---

**THE  
Villiers Engineering Company  
LIMITED**

**BLAKENHALL, WOLVERHAMPTON**



Spare and  
Replacement Parts List  
*of*  
**VILLIERS**

**TWO-STROKE  
ENGINES**

MARK VIA, VIB AND VIC

*including*

FLYWHEEL MAGNETOS AND  
ELECTRIC LIGHTING EQUIPMENT

---

THE  
**Villiers Engineering Company**  
LIMITED

BLAKENHALL, WOLVERHAMPTON

Telegrams :  
"VILLIERS, WOLVERHAMPTON"

Telephone Nos.  
292 and 1076 WOLVERHAMPTON

# IMPORTANT

.....

1.—When sending parts for replacement, repair, or as pattern, the name and address of the sender should always be securely attached, and full instructions explaining what is required should be sent separately by post. Under no circumstances should instructions be enclosed with the parts, as they are liable to be lost or damaged in unpacking.

2.—If an engine is sent for repair, this should be well packed in a strong box. Cardboard or a sack is insufficient, and engines so packed are liable to get seriously damaged in transit.

3.—All goods must be consigned to us carriage paid. Parts sent carriage forward are liable to be refused and so lead to unnecessary expense to the sender.

4.—In correspondence, always quote the engine number which will be found stamped on the crank case just below the cylinder flange, and be sure to give the prefixed letter. **This is very important.**

5.—Not being manufacturers of complete motor bicycles, **only the engine should be sent to us.**

If machines are forwarded, extra expense will be charged for dismantling the engine from the frame and refitting same.

6.—We prefer to bench test every repair before returning it to its owner, so it is always advisable to send the engine complete with its magneto and sparking plug.

7.—In sending a flywheel magneto for overhaul, send it **complete** with the armature plate and the flywheel. These parts should under no circumstances be separated, as a certain amount of magnetic flux is lost thereby.

8.—Always quote the magneto number, which is stamped on the face of the flywheel, when sending for spares.

9.—Old or worn-out parts sent as patterns, which we consider obsolete, are not returned unless specially asked for by the owner at the time of sending them to us.

10.—Drawing numbers must be specified when spare parts are required. Also quote the name of the article. The illustration number is only given for index purposes to readily find the name of the article.

11.—When lighting coils are required to be fitted to the small magneto, it is necessary for the magneto complete to be returned to us, as the coils have to be wound on to the cheeks.

12.—Free engine clutches should be returned to us for rebushing, as this operation requires special machinery and jigs.

13.—When returning early type engines to us, please see that these are sent complete with the flywheel and centre (if fitted).

## TERMS OF BUSINESS.

Repairs and spares must always be treated on a cash basis. Ledger accounts are opened for items of £5 and upwards, upon receipt of approved references.

When spares are required, sufficient extra should be included in the remittance to cover the cost of postage.

Goods returned by rail are consigned carriage forward.

Stamps cannot be accepted for items over one shilling in value.

When making remittances by Telegraph Money Order, the name and address of the sender **must** be included in the space provided on the Post Office Requisition Form for a private message from remitter to payee; unless this is done, the Post Office do not give this information upon the telegram.

## ESTIMATES.

If requested, we are always prepared to give an estimate before proceeding with repairs, but this entails a certain amount of labour in dismantling

the parts to ascertain what new parts will be required.

Estimates must be treated as approximate only, because we must reserve the right, if we find, on bench test, further new parts are required to make the repair satisfactory, to have the option of including same.

In case of the estimate not being accepted for special reasons, a small charge is made for our mechanics' time in taking the parts to pieces for report, and re-assembling same into their original state.

We do not undertake to fit specified parts only to engines sent back to us for overhaul, when we consider that other parts are required to make an efficient repair. In such cases, we are prepared to supply the customer's requirements in spares, but we do not undertake to fit them.

#### **GUARANTEE.**

A copy of this is printed on the back of our current booklet.

---

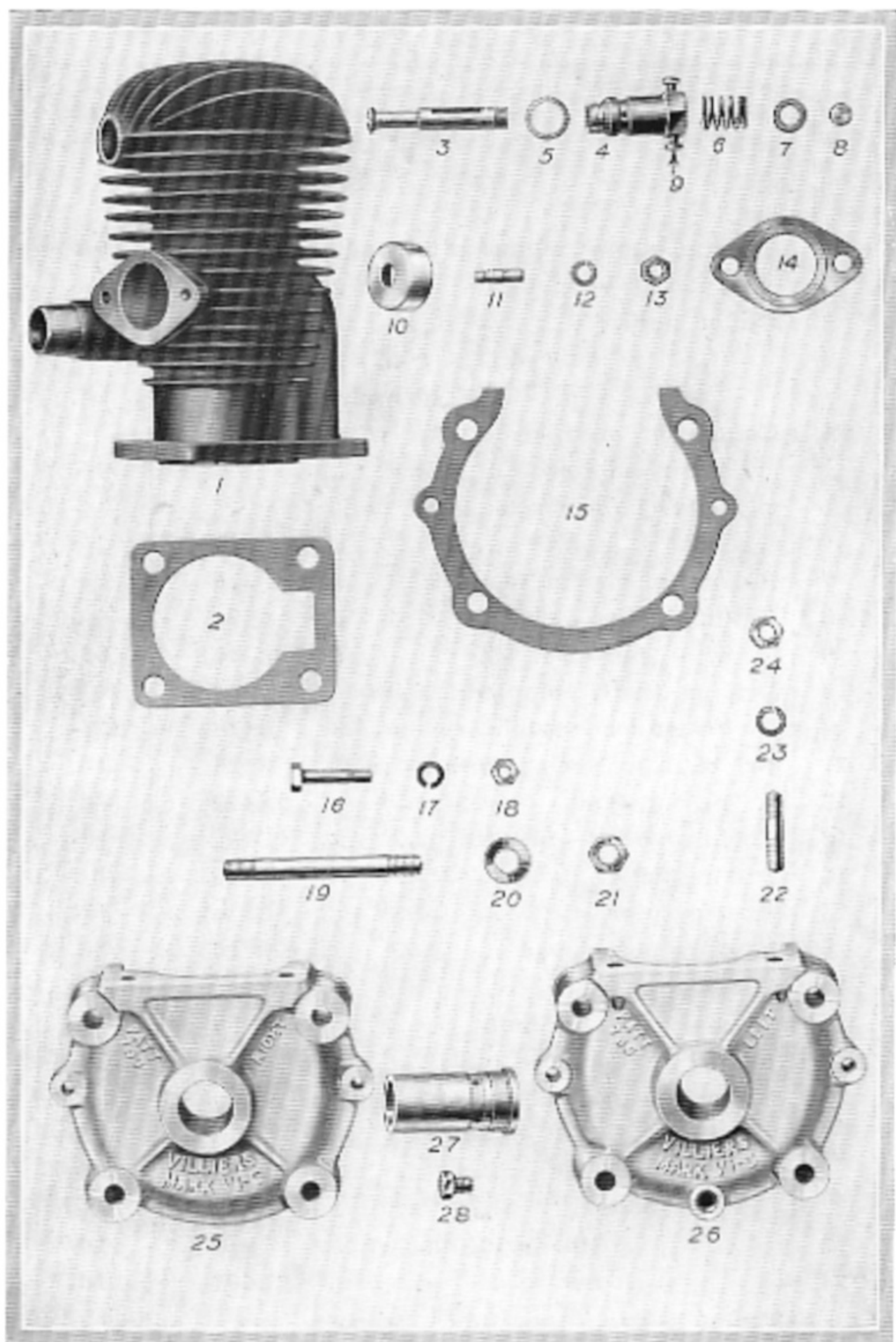
This edition cancels all previous Spare Parts and Replacement Lists for VILLIERS Mark VI Engines.

## MARK VIC. 1½H.P. ENGINE.

Illust. No.	Description	Drg. No.	PRICE
1	Cylinder only ... ..	B1118	40/-
2	„ joint washer ... ..	D1121	4d.
	Sparking plug and washer ... ..		4/6
3	Release valve stem ... ..	E1158	1/-
4	„ „ body ... ..	E1159	1/6
5	„ „ packing washer ... ..	E1238	1d.
6	„ „ spring ... ..	E1163	3d.
7	„ „ knurled nut ... ..	E1162	2d.
8	Cable holder ... ..	E1160	1d.
9	„ screw ... .. (each)	E1161	1d.
10	Cap for release valve ... ..	E1225	3d.
11	Exhaust flange stud ... ..	E392	1d.
12	„ „ „ ¼in. spring washer ... ..		1d.
13	„ „ stud nut ... ..	E401	1d.
14	„ „ joint washer ... ..	E1157	6d.
15	Crankcase paper joint washer ... ..	D1122	2d.
16	„ bolt ... ..	E783	2d.
17	„ „ ¼in. spring washer ... ..		1d.
18	„ „ nut ... ..	E401	1d.
19	Engine stud ... ..	E835	3d.
20	„ washer ... ..	E373	1d.
21	„ nut ... ..	E834	1d.
22	Cylinder stud ... ..	E363	2d.
23	„ „ ⅙in. spring washer ... ..		1d.
24	„ „ nut ... ..	E364	1d.
25	Crankcase (right half) ... ..	B1151	15/-
26	„ (left half) ... ..	B1150	15/-
27	„ bush ... ..	E1156	3/-
28	„ drain plug ... ..	E381	2d.

Please quote Drg. No., where given, when ordering Spare Parts.

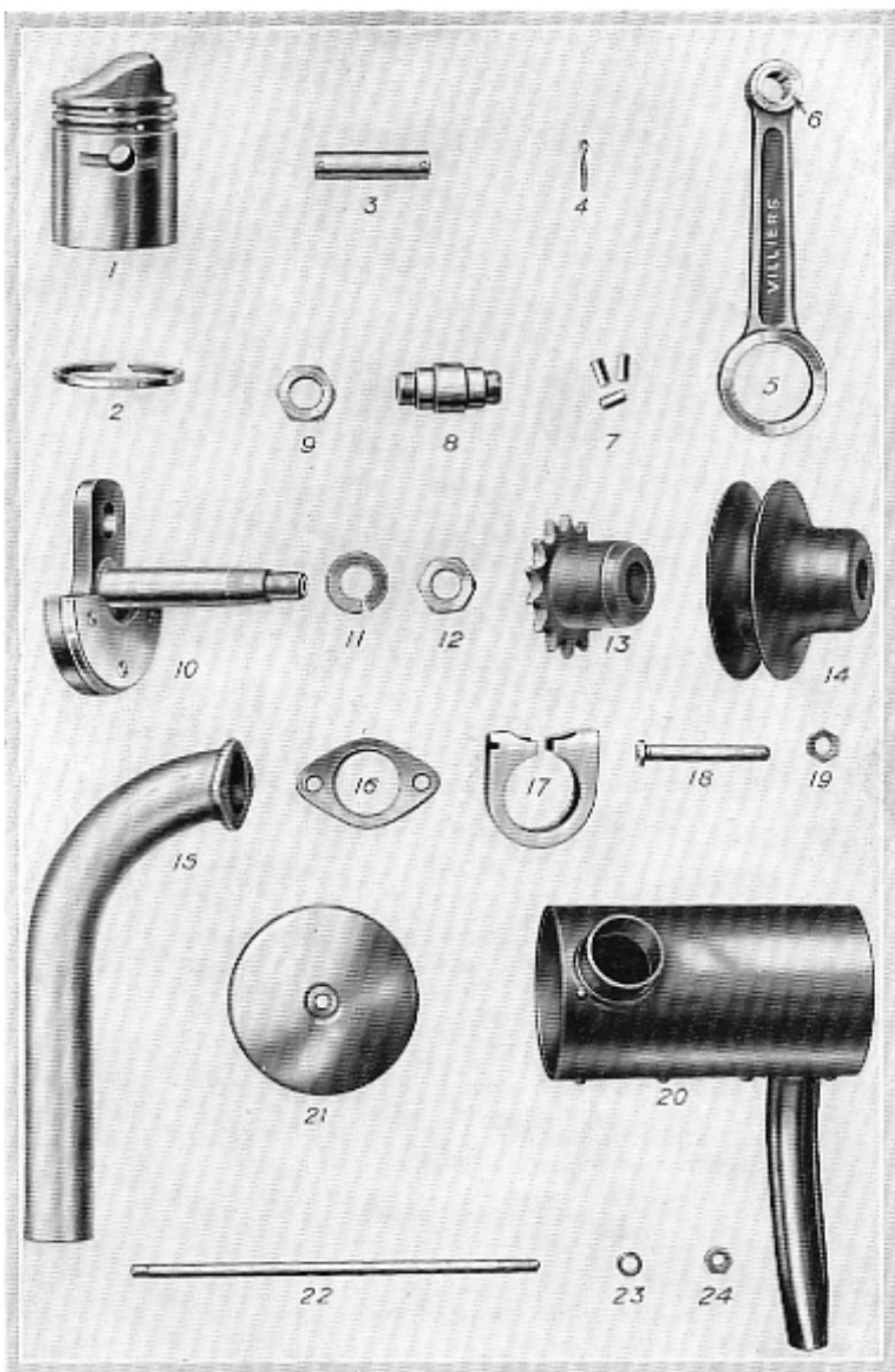




## MARK VI C. 1½ H.P. ENGINE.

Illust. No.	Description	Drg. No.	PRICE
1	Piston (complete with pegs for rings)	C1146	9/-
2	„ ring ... ..	E1136	1/6
3	Gudgeon pin ... ..	E1155	1/6
4	„ „ split pin, $\frac{7}{8} \times \frac{3}{16}$ in. ... (per pair)		1d.
5	Connecting rod, complete with small end bush ... ..	D1076/E1170	9/-
6	Connecting rod bronze small end bush ... ..	E1170	1/6
7	Rollers for big end (per set) ...	E375	1/6
8	Crank pin ... ..	E374	4/6
9	„ nut ... ..	E346	3d.
10	Driving shaft, complete as illus- trated (each side) ... ..	D1143	12/-
11	Driving shaft spring washer ...	E424	1d.
12	„ „ nut ... ..	E422	3d.
13	Chain sprocket—14 teeth ... ..	D1221	5/-
14	Driving pulley ... ..	D1181	5/-
15	Exhaust pipe ... ..	C1261	5/-
16	„ port flange ... ..	E1168	3d.
17	„ pipe clip ... ..	E462	1/6
18	„ „ bolt ... ..	E435	6d.
19	„ „ „ nut ... ..	S/1010 x 9	1d.
20	Silencer body, complete with tail pipe ... ..		7/6
21	Silencer end plate ... ..	D251	6d.
22	„ bolt ... ..	E434	1/-
23	„ „ $\frac{1}{4}$ in. spring washer ...		1d.
24	„ „ nut ... ..	E401	1d.

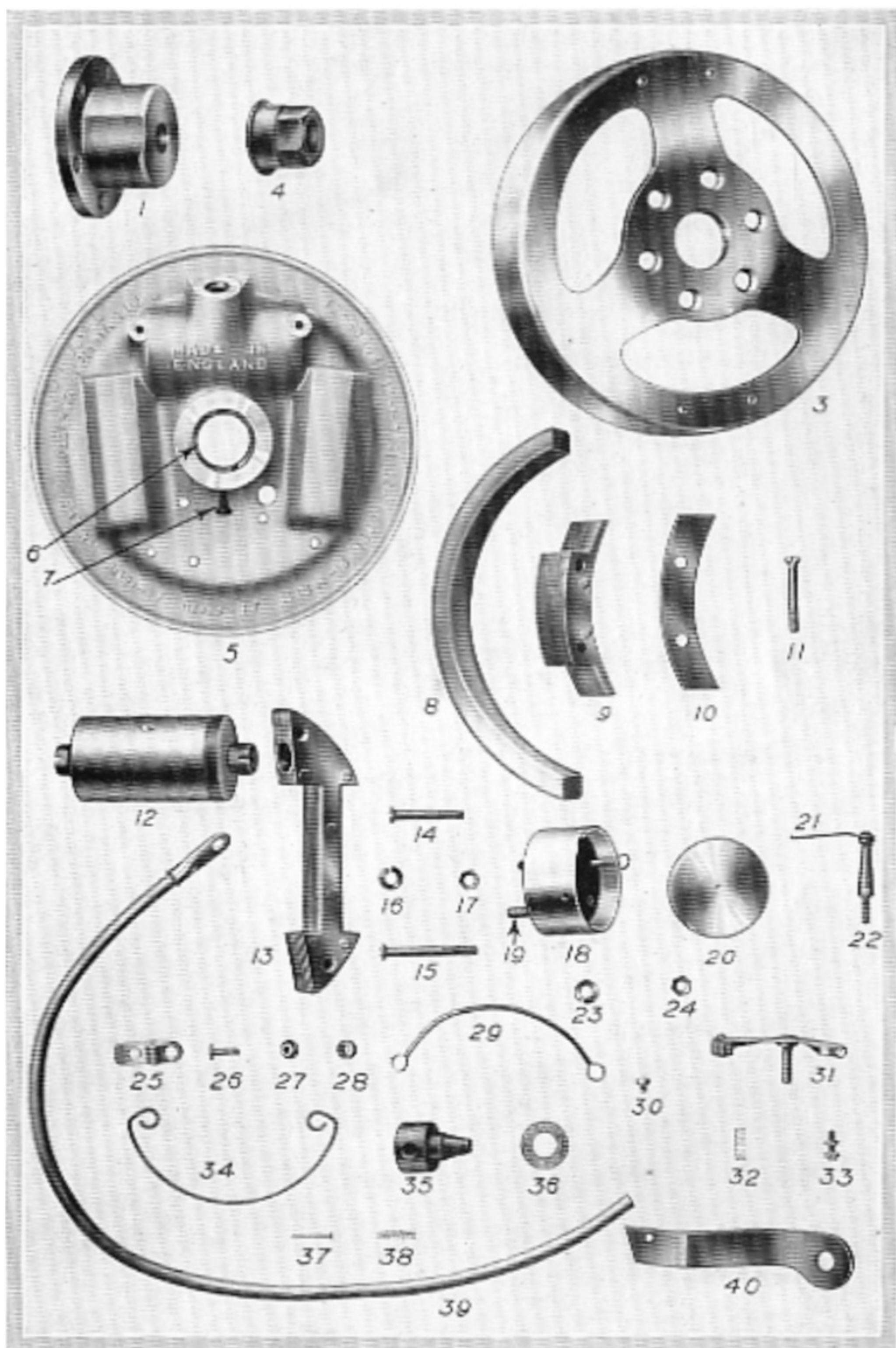
Please quote Drg. No., where given, when ordering Spare Parts.



MARK VIC.  $1\frac{1}{2}$  H.P.  
FLYWHEEL MAGNETO AND LIGHTING SET

Illust. No.	Description	Drg. No.	PRICE
1	Cam ... ..	1012 x 3	2:9
3	Flywheel ... ..	1027 x 2	14:6
4	" nut ... ..	1010 x 1	9d.
5	Armature plate ... ..	1027 x 3	5:3
6	" " steel bush ... ..	1030 x 13	9d.
7	" " locking screw ... ..	1022 x 4	2d.
8	Magnet ... .. (per pair)	1027 x 1	15:-
9	Pole Shoe ... ..	1018 x 10	2:6
10	" top plate ... ..	1018 x 13	3d.
11	" screw ... ..	1002 x 9	1d.
12	Ignition coil ... ..	1030 x 16	15:-
13	Laminated Cheek (ignition only) (per pair)	1018 x 12	2:9
14	Armature plate screw (short) ... ..	1002 x 9	1d.
15	" " (long) ... ..	1030 x 8	1d.
16	" " spring washer ... ..	1002 x 13	1d.
17	" " nut ... ..	1002 x 15	1d.
18	Condenser and condenser box ... ..		6:3
19	Condenser box stud ... ..	1002 x 12	1d.
20	" cover ... ..	1015 x 7	3d.
21	" clip ... ..	1015 x 5	1d.
22	" " stud ... ..	1015 x 6	2d.
23	Spring washers for illustrations Nos. 19 and 22 ... ..	1002 x 13	1d.
24	Nuts for illustrations Nos. 19 and 22 ... ..	1002 x 15	1d.
25	Point clamp ... ..	1022 x 7	6d.
26	" screw ... ..	1013 x 3	1d.
27	" top insulated bush ... ..	1013 x 13	1d.
28	" bottom insulated bush ... ..	1013 x 12	1d.
29	Low Tension Lead ... ..	1022 x 9	6d.
30	" " plug ... ..	1006 x 3	1d.
31	Rocker arm, complete with platinum point and fibre ... ..		7:6
32	Rocker arm brass spring ... ..	1013 x 7	3d.
33	Screwed platinum point, complete with lock nut ... ..	1004 x 4	5:-
34	High tension terminal fastener ... ..	1030 x 11	3d.
35	" " ... ..	1010 x 9	9d.
36	" " felt washer ... ..	E869	2d.
37	" cable screw $\frac{3}{8}$ in. No. 2 ... ..		1d.
38	" terminal spring ... ..	1010 x 11	2d.
39	" cable, complete with sparking plug terminal ... ..		1:6
40	Fixed ignition strap ... ..	1035 x 2	6d.

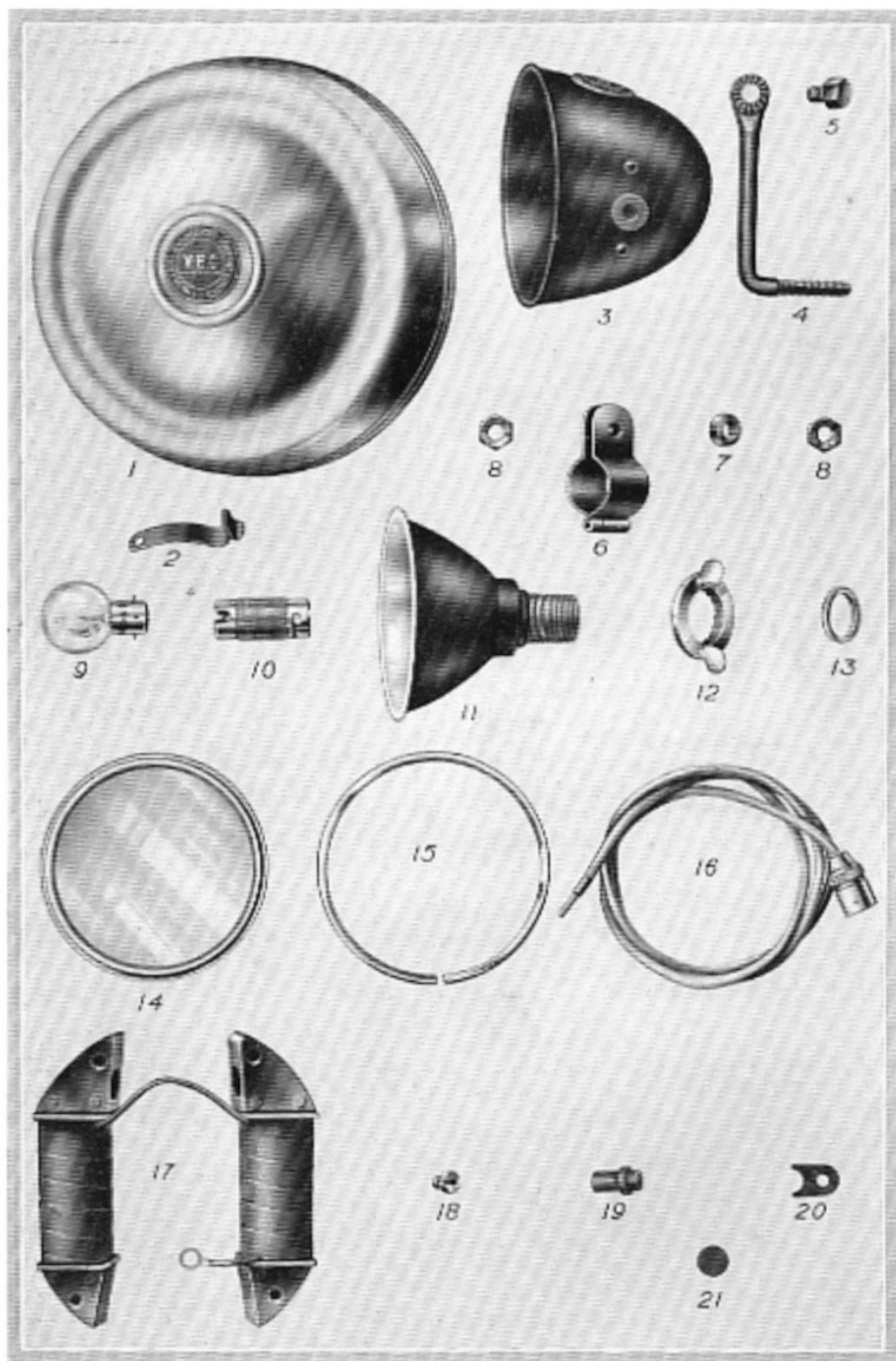
Please quote Drg. No. where given, when ordering Spare Parts.



**MARK VIC.**  
**FLYWHEEL MAGNETO AND LIGHTING SET**

Illust. No.	Description	Drg. No.	PRICE
1	Magneto cover, complete with badge	1029 x 1	4/-
2	" " spring clip ... ..	1030 x 5	2d.
3	Head lamp outer shell ... ..	1036 x 1	3/-
4	" bracket arm ... (each)	1036 x 2	7d.
5	" " screw ... ..	1036 x 3	2d.
6	" " clip (each)	1036 x 4	5d.
7	" " washer ... ..	1036 x 5	1d.
8	" " nut ... ..	1036 x 6	1d.
9	" bulb ... ..	1018 x 3	2/3
10	" " holder ... ..	1036 x 7	1/10
11	Reflector ... ..	1036 x 8	3/2
12	Wing nut... ..	1036 x 9	9d.
13	Locking nut ... ..	1036 x 10	2d.
14	Glass front ... ..	1036 x 11	10d.
15	" lock ring ... ..	1036 x 12	6d.
16	Cable, with adapter end and split terminal ... ..	1036 x 13	3/-
17	Lighting coils, complete with cheeks	1018 x 11	15/-
18	" lead screw ... ..	1018 x 2	3d.
19	" terminal insulated bush ...	1013 x 15	6d.
20	" terminal bush clip... ..	1018 x 8	2d.
21	Armature plate plug ... ..	1010 x 14	1d.

Please quote Drg. No., where given, when ordering Spare Parts.

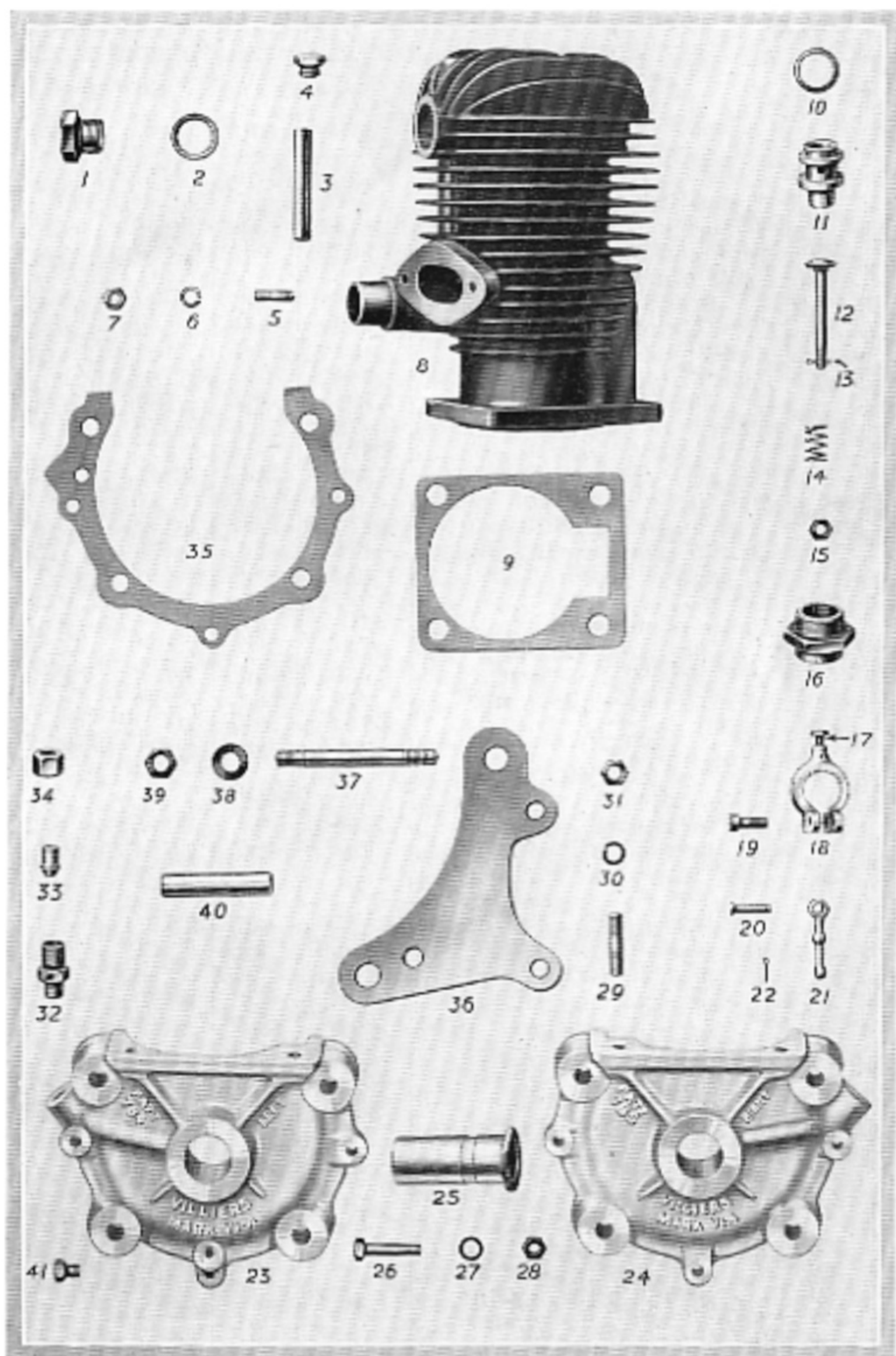


## MARK VIA. AND V1B. ENGINE.

Illust. No.	Description	V1A (2½ H.P.)		V1B (3½ H.P.)	
		Drsg. No.	PRICE	Drsg. No.	PRICE
1	Plug for cylinder ... ..	E792	4d.	E792	4d.
2	„ washer ... ..	E463	2d.	E463	2d.
3	Release valve by-pass tube	E578	3d.	E578	3d.
4	Release valve by-pass tube plug ... ..	E481	4d.	E481	4d.
5	Exhaust flange stud ... ..	E392	1d.	E392	1d.
6	Exhaust flange stud ½ in. spring washer ... ..		1d.		1d.
7	Exhaust flange stud nut ... ..	E401	1d.	E401	1d.
8	Cylinder, complete with by-pass tube ... ..	B1072	45/-	B1082	50/-
9	Cylinder joint washer ... ..	D217	6d.	D1142	9d.
10	Release valve washer ... ..	E491	1d.	E491	1d.
11	„ body ... ..	D294	1/6	D294	1/6
12	„ stem ... ..	D297	1/-	D297	1/-
13	„ „ split pin	E421	1d.	E421	1d.
14	„ spring ... ..	E617	3d.	E617	3d.
15	„ nut ... ..	E401	1d.	E401	1d.
16	„ cover ... ..	D295	1/6	D295	1/6
17	Screw for holding wire ... ..	E484	1d.	E484	1d.
18	Release valve clip ... ..	D296	2/-	D296	2/-
19	„ „ screw ... ..	E478	1d.	E478	1d.
20	Lever pivot pin ... ..	E477	2d.	E477	2d.
21	Release valve lever ... ..	E576	6d.	E576	6d.
22	Split pin for lever pivot ... ..		1d.		1d.
23	Crankcase (left half) ... ..	B1104	20/-	B1092	22/6
24	„ (right half) ... ..	B1105	20/-	B1093	22/6
25	„ bush ... ..	D1115	4/-	D1115	4/-
26	„ bolt ... ..	E783	2d.	E783	2d.
27	„ „ ¼ in. spring washer... ..		1d.		1d.
28	„ „ nut ... ..	E401	1d.	E401	1d.
29	Cylinder stud ... ..	E363	2d.	E363	2d.
30	„ ½ in. spring washer ... ..		1d.		1d.
31	„ nut ... ..	E364	1d.	E364	1d.
32	Oil pipe union ... ..	E1016	6d.	E1016	6d.
33	„ nipple ... ..	E585	3d.	E585	3d.
34	„ „ nut ... ..	E584	3d.	E584	3d.
35	Crankcase joint washer ... ..	D1120	3d.	D1120	3d.
36	Engine plate ... (per pair)	C1091	6/-	C1091	6/-
37	„ stud ... ..	E835	3d.	E835	3d.
38	„ „ washer... ..	E373	1d.	E373	1d.
39	„ „ nut ... ..	E834	1d.	E834	1d.
40	„ plates distance piece	E788	2d.	E788	2d.
41	Crankcase drain plug ... ..	E381	2d.	E381	2d.

Please quote Drsg. No., where given, when ordering Spare Parts.





## MARK VIA AND VIB ENGINE

Illust. No.	Description	VIA (2½ H.P.)		VIB (3½ H.P.)	
		Drg. No.	PRICE	Drg. No.	PRICE
1	Piston (with piston ring pegs) ... ..	C1112	12/-	C1083	15/-
2	Gudgeon pin ... ..	E1020	2/3	E1138	3/-
3	Split pin for gudgeon pin 7/8 × 3/32 in. diam. (per pair)		1d.		1d.
4	Piston ring ... .. (each)	E1022	1/9	E1021	2/-
5	Small end bush ... ..	E1019	1/6	E1019	1/6
6	Connecting Rod, complete	D1198&		D1198&	
7	with small end bush ...	E1019	10/6	E1019	10/6
8	Rollers for big end (per set)	E375	1/6	E375	1/6
9	Crank pin ... ..	E374	4/6	E374	4/6
10	nut ... .. (each)	E346	3d.	E346	3d.
11	Driving shaft (each side) complete as illustrated	D1116	15/-	D1114	17/6
12	Driving shaft spring washer	E424	1d.	E424	1d.
13	nut ... ..	E422	3d.	E422	3d.
14	Centre ... ..	D793	7/6	D793	7/6
15	Chain sprocket ... ..		3/-		3/-
16	locking washer ...	E778	2d.	E778	2d.
17	lock nut ... ..	E779	6d.	E779	6d.
18	Pulley ... ..	D794	5/-	D1173	5/-
19	screw ... ..	E781	1d.	E781	1d.
20	1/2 in. spring washer ...		1d.		1d.
21	Cap for centre ... ..	D1055	9d.	D1055	9d.
22	screw ... ..	E784	1d.	E784	1d.
23	1/4 in. spring washer ...		1d.		1d.
24	Exhaust pipe flange washer	E1018	4d.	E1018	4d.
25	Exhaust Pipe ... ..	B1086	7/6	B1086	7/6
26	clip ... ..	E1130	1/6	E1130	1/6
27	bolt ... ..	E435	6d.	E435	6d.
28	nut ... ..	S/1010		S/1010	
29	silencer body, complete as illustrated ... ..	x9	1d.	x9	1d.
30	Silencer end cover (plain) ...	D251	10/6	D251	10/6
31	(short ear) ... ..	D252	6d.	D252	6d.
32	(extra short ear) ... ..	D254	1/-	D254	1/-
33	bolt (long) ... ..	E1129	1/-	E1129	1/-
34	(short) ... ..	E787	9d.	E787	9d.
35	1/2 in. spring washer ...		1d.		1d.
36	nut ... ..	E401	1d.	E401	1d.

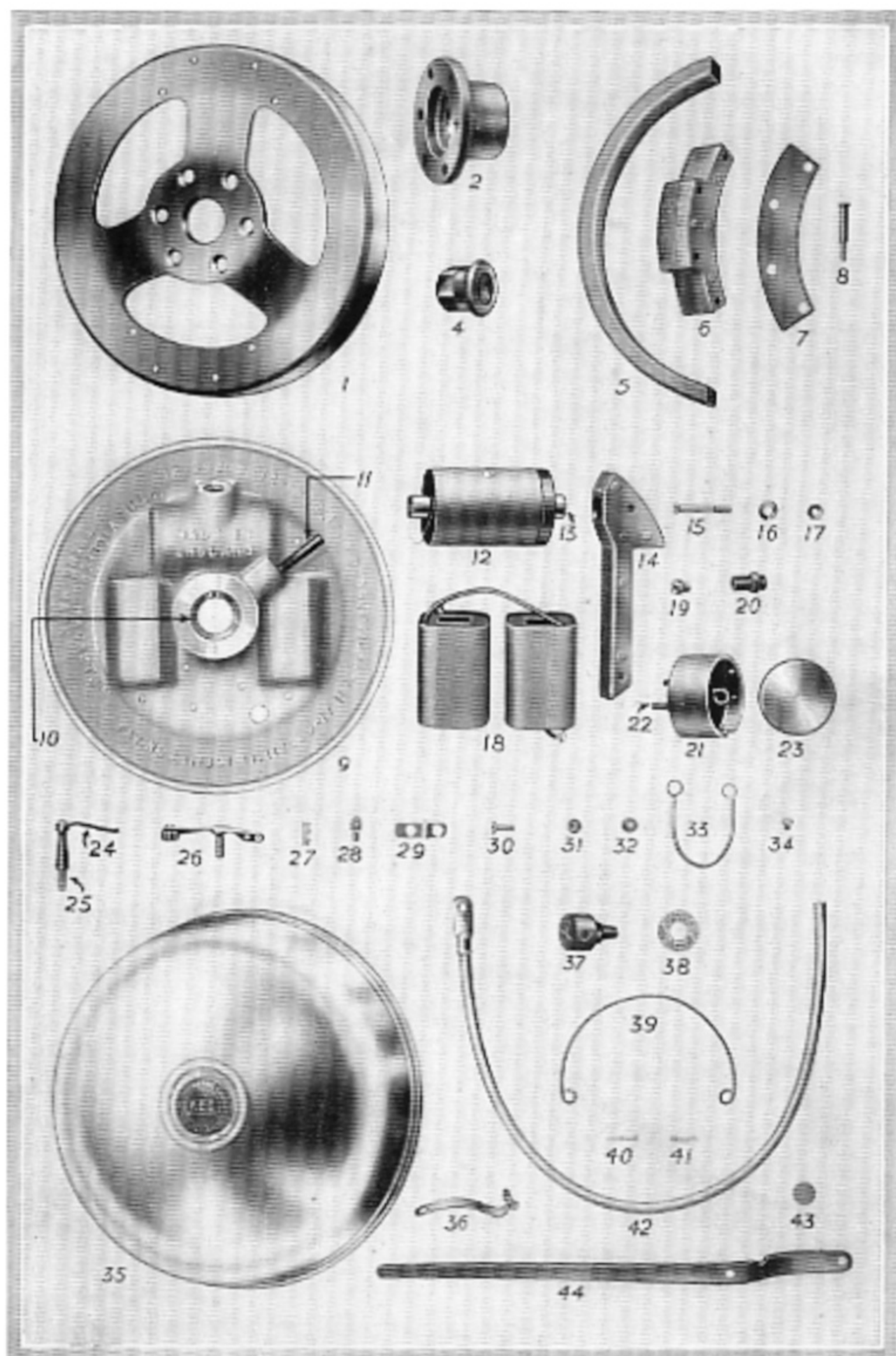
Please quote Drg. No., where given, when ordering Spare Parts.



## MARK VIA. AND VIB. MAGNETO AND LIGHTING SET

Illust. No.	Description	Drg. No.	PRICE
1	Flywheel ... ..	1001 x 1	20/-
2	Cam ... ..	1012 x 3	2/9
4	Flywheel nut ... ..	1010 x 1	9d.
5	Magnet ... .. (per pair)	1001 x 3	18/-
6	Pole shoe ... ..		4/6
7	"    top plate ... ..	1015 x 15	4d.
8	"    screw ... ..	1002 x 9	1d.
9	Armature plate ... ..	1012 x 1	10/6
10	"    "    steel bush ... ..	1015 x 8	1/-
11	"    "    locking screw ... ..	1015 x 4	3d.
12	Ignition coil ... ..	1008 x 1	20/-
13	"    core ... ..	1015 x 12	2/6
14	Laminated cheek assembly (per pair)	1022 x 15	4/6
15	Armature plate screw ... ..	1002 x 9	1d.
16	"    "    washer ... ..	1002 x 13	1d.
17	"    "    nut ... ..	1002 x 15	1d.
18	Lighting coils ... ..		15/-
19	"    "    terminal screw ... ..	1018 x 2	2d.
20	Lighting terminal bush ... ..	1013 x 15	6d.
21	Condenser box, complete with condenser ... ..		6/3
22	Condenser box stud ... ..	1002 x 12	1d.
23	"    "    cover ... ..	1015 x 7	3d.
24	"    "    "    clip ... ..	1015 x 5	1d.
25	"    "    "    stud ... ..	1015 x 6	2d.
26	Rocker arm, complete with plati- num point and fibre ... ..		7/6
27	Rocker arm spring ... ..	1013 x 7	3d.
28	Screwed platinum point, with lock nut ... ..		5/-
29	Point clamp ... ..	1022 x 7	6d.
30	"    screw ... ..	1013 x 3	1d.
31	"    insulated top bush ... ..	1013 x 13	1d.
32	"    insulated bottom bush ... ..	1013 x 12	1d.
33	Low tension lead ... ..	1022 x 9	6d.
34	"    "    plug ... ..	1006 x 3	1d.
35	Magneto cover and badge ... ..	1001 x 4	5/-
36	"    "    clip ... ..	1002 x 4	2d.
37	High tension terminal ... ..	1010 x 9	9d.
38	"    "    felt washer ... ..	E869	2d.
39	"    "    fastener ... ..	1010 x 10	3d.
40	"    "    screw $\frac{3}{16}$ in. No. 2 ... ..		1d.
41	"    pick-up spring ... ..	1010 x 11	2d.
42	"    cable and shoe ... ..		1/6
43	Armature plate plug ... ..		1d.
44	Ignition control lever ... ..	1011 x 2	9d.

Please quote Drg. No. where given, when ordering Spare Parts.



## MARK VIA. AND VIB. LIGHTING SET.

Illust. No.	Description	Drg. No.	PRICE
1	Head lamp front ... ..	1036 x 14	4/-
2	"    glass ... ..	1036 x 15	9d.
3	Retaining ring for glass ... ..	1036 x 16	3d.
	Rubber packing washer for glass ...	1037 x 1	3d.
4	Head lamp body and reflector ...	1037 x 2	15/-
5	"    bracket ... ..(each)	1037 x 3	1/6
6	"    "    lug ... ..	1037 x 4	9d.
7	"    "    washer ... ..	1037 x 5	1d.
8	"    "    nut ... ..	1037 x 6	1d.
9	"    wing nut ... ..	1037 x 7	6d.
10	"    bracket clamp ... ..	1037 x 8	4d.
11	Handlebar clamp ... ..	1037 x 9	6d.
12	Bracket clamp bolt ... ..	1037 x 10	6d.
13	"    "    spring washer ...	1037 x 11	1d.
14	"    "    nut ... ..	1037 x 12	2d.
15	Handlebar clamp bolt ... ..	1037 x 13	4d.
16	"    "    "    nut ... ..	1037 x 14	2d.
17	Wedge ring ... ..	1037 x 15	2/-
18	"    screw ... ..	1037 x 16	1d.
19	Locking ring ... ..	1038 x 15	1/-
20	Head lamp bulb ... ..	1018 x 3	2/3
21	"    "    holder ... ..	1038 x 1	2/-
22	"    locking collar ... ..		6d.
23	Dry battery ... ..	1018 x 5	9/-
24	Battery box ... ..	1018 x 2	5/-
25	"    lid and badge ... ..	1018 x 3	1/6
26	"    washer ... ..	1018 x 4	1d.
27	"    nut ... ..	1018 x 5	3d.
28	Switch box ... ..	1018 x 6	5/-
29	Head lamp bulb plug ... ..	1018 x 7	1/-
30	"    cable, 5 m/m. ... ..	1018 x 8	6d.
31	Tail lamp cable ... ..	1018 x 9	2/6
32	Magneto lead, complete with split terminal ... ..		1/6
33	Tail lamp bulb ... ..	1018 x 4	2/-
34	"    "    holder ... ..	1038 x 11	6d.
35	"    "    plug ... ..	1038 x 12	6d.
36	"    "    "    cover ... ..	1038 x 13	6d.
37	"    "    "    "    nut ... ..	1038 x 14	3d.
38	Locking nut ... ..	1038 x 16	9d.
39	Tail lamp body and glass ... ..	1039 x 1	4/-
40	"    fixing plate ... ..	1039 x 2	6d.
41	"    "    nut ... ..	1039 x 3	6d.

Please quote Drg. No., where given, when ordering Spare Parts.



## FREE ENGINE CLUTCH

Illust. No.	Description	Drg. No.	PRICE
1	Centre ... ..	D911	2/9
2	Clutch body complete with 2 bushes	D910/E936	7/6
3	Clutch body bush, per pair ... ..	E936	2/9
4	Key washer ... ..	E940	3d.
5	Lock nut... ..	E937	9d.
6	Oil hole cover ... ..	E1011	1d.
7	" " rivet ... ..	E1012	1d.
8	Pulley ... ..	D917	4/-
9	Bossed chain sprocket ... ..	Various	3/-
10	Recessed chain sprocket ... ..	E974	3/-
11	Chain sprocket lock nut ... ..	E975	9d.
12	Distance washer for chain sprocket, $\frac{1}{32}$ in. thick ... ..		2d.
	Ditto $\frac{1}{16}$ in. thick... ..		2d.
	Ditto $\frac{1}{8}$ in. " ... ..		2d.
12a	Distance piece for recessed chain sprocket ... ..	E976	6d.
13	Back plate (thick) ... ..	D953	9d.
14	Inside clutch plates (steel) ... set	D915	2/9
15	Outside clutch plates (bronze) ..	D914	4/-
16	Pressure plate ... ..	D913	2/-
17	Outer clutch cover ... ..	D912	3/-
18	Spring ... ..	D916	1/-
19	Outside cover bearing, complete with tubular guide ... ..		3/-
20	Tubular guide ... ..	D950	1/3
21	Inside cover bearing, complete ... ..		2/-
22	Short cone ... ..	E939	6d.
23	Ball cup (each) ... ..	E935	6d.
24	Felt washer ... ..	E869	2d.
25	Long cone ... ..	E938	9d.
26	$\frac{1}{8}$ in. diameter balls (per set)... ..		6d.
27	Ball bearing cover (recessed) ... ..	E1284	2d.
28	" " (plain) ... ..	E934	2d.
29	Inner cable nipple ... ..	E943	2d.
30	Nipple holder ... ..	E944	3d.
31	Cable adjusting screw ... ..	E941	8d.
32	" " " lock nut ... ..	E942	1d.
33	Outer cable with ferrules ... ..		2/6
34	Inner cable ... ..		6d.
35	*Clip for control lever (top half) ... ..	D954	9d.
36	" " " (bottom half) ... ..	D955	1/6
37	Clip screw (each) ... ..	E946	1d.
38	Handlebar control lever ... ..	D959	1/6
39	Lever pin ... ..	E477	2d.
40	" " split pin ... ..	E421	1d.
41	Outer cable cup ... ..	E1134	2d.
42	Cable screw ... ..	E484	1d.
43	" holder ... ..	E864	2d.
44	" screw pad ... ..	E865	1d.

\*Please state whether required for  $\frac{1}{2}$  in. or 1 in. Handlebars.  
Please quote Drg. No. where given, when ordering Spare Parts.



